

WAAS CH 45717 W20A	APP CRS 202°	Rwy Idg TDZE Apt Elev	6450 874 874
--	------------------------	-----------------------------	---

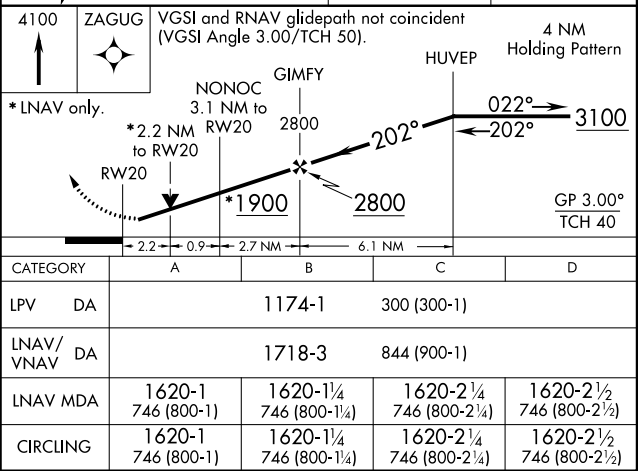
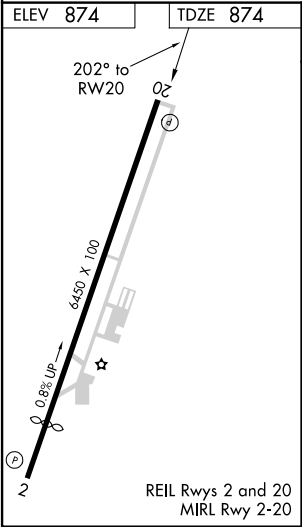
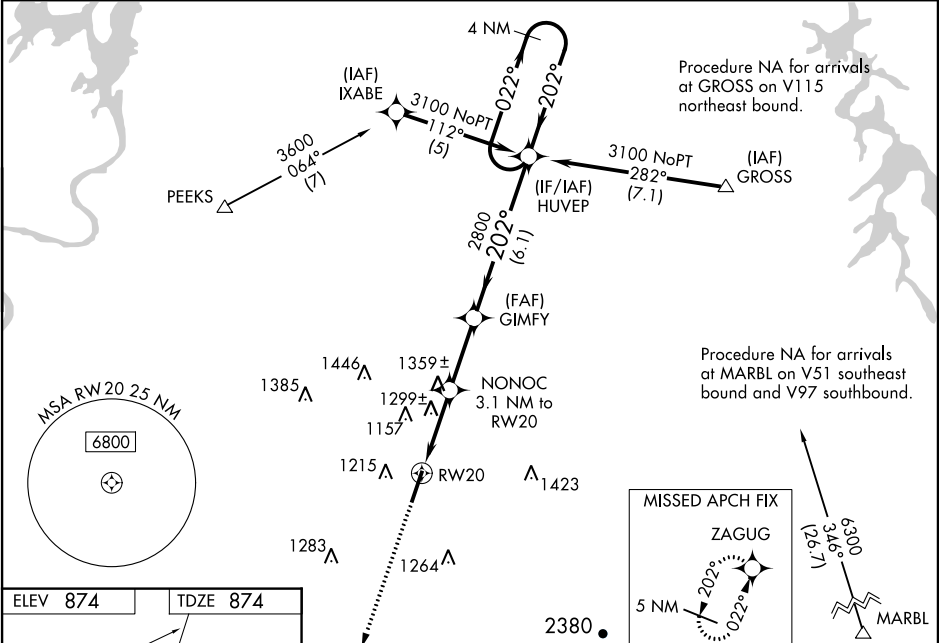
RNAV (GPS) RWY 20
MCMINN COUNTY (MMI)

NA

Baro-VNAV NA when using Mc Ghee Tyson altimeter setting. For uncompensated Baro-VNAV systems, LNAV/VNAV NA below 16°C (4°F) or above 54° (130°F). DME/DME RNP-0.3 NA. Helicopter visibility reduction below 3/4 SM NA. When local altimeter setting not received, use Mc Ghee Tyson altimeter setting and increase all DA 101 feet; all MDA 120 feet; LPV all Cnts visibility 1/2 mile; LNAV/VNAV all Cnts visibility 1 mile; LNAV and Circling Cat B visibility 1/2 mile; LNAV and Circling Cnts C/D visibility 1/2 mile. VDP NA when using Mc Ghee Tyson altimeter setting. Night Landing: Rwy 2 NA.

MISSED APPROACH:
Climb to 4100 direct ZAGUG and hold.

AWOS-3 125.425	KNOXVILLE APP CON 123.9 353.6	UNICOM 122.8 (CTAF)
--------------------------	---	-------------------------------



SE-1, 03 DEC 2020 to 31 DEC 2020

SE-1, 03 DEC 2020 to 31 DEC 2020