

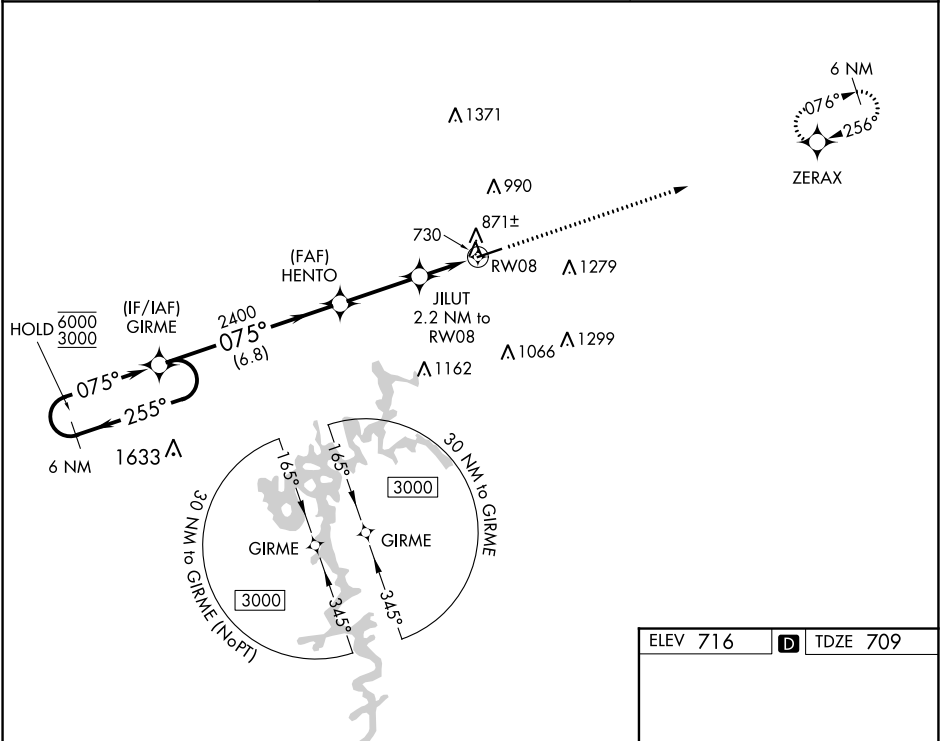
WAAS CH <b>77607</b> <b>W08A</b>	APP CRS <b>075°</b>	Rwy Idg TDZE Apt Elev	<b>5000</b> <b>709</b> <b>716</b>
--	------------------------	-----------------------------	---

RNAV (GPS) RWY 8

GLASGOW MUNI (GLW)

RNP APCH.	MISSED APPROACH: Climb to 3000 direct ZERAX and hold.
<div><div></div><div></div></div> <div>Circling to Rwy 26 NA at night. For uncompensated Baro-VNAV systems, LNAV/VNAV NA below -16°C or above 54°C.</div>	

AWOS-3 <b>118.525</b>	MEMPHIS CENTER <b>132.9 290.3</b>	UNICOM <b>122.8</b> (CTAF) <b>1</b>
--------------------------	--------------------------------------	--



6 NM Holding Pattern		VGSI and RNAV glidepath not coincident (VGSI Angle 3.00/TCH 29).		3000	ZERAX
6000 3000		GIRME		HENTO	
GP 3.00° TCH 40		2400		JILUT 2.2 NM to RW08	
255°		075°		*LNAV only	
075°		2400		*1.3 NM to RW08	
6.8 NM		3 NM		0.9 NM	
1.3 NM		RW08		5302 X 100	
CATEGORY	A	B	C	D	
LPV DA	971-1		262 (300-1)		
LNAV/VNAV DA	1125-1 3/8		416 (500-1 3/8)		
LNAV MDA	1140-1	431 (500-1)	1140-1 1/4	431 (500-1 1/4)	
					MIRL Rwy 8-26 <b>1</b> REIL Rwy 8 and 26 <b>1</b>