

WAAS CH 72938 W19A	APP CRS 191°	Rwy Idg TDZE 356 Apt Elev 358
--	------------------------	---

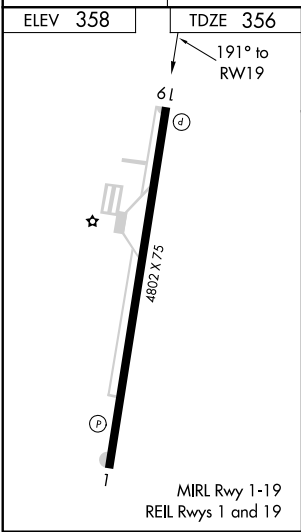
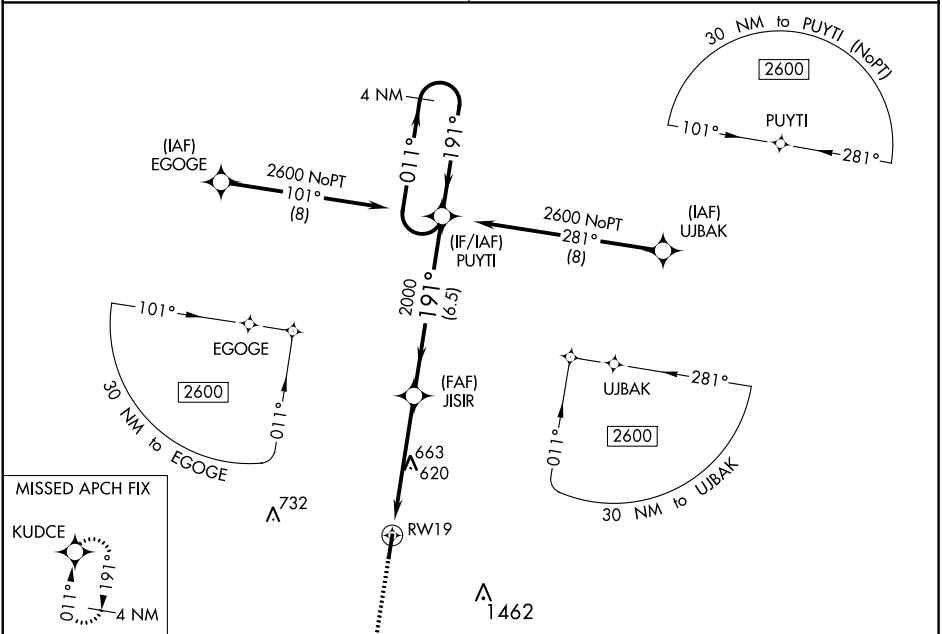
RNAV (GPS) RWY 19

GIBSON COUNTY (TGC)

⚠ Night landing: Rwy 19 NA. DME/DME RNP-0.3 NA. Helicopter visibility reduction below 1 SM NA. Obtain local altimeter setting on CTAF; when not received use McKellar-Sipes Rgnl altimeter setting and increase all MDA 60 feet, increase Circling Cat C visibility ¼ mile.

MISSED APPROACH: Climb to 2600 direct KUDCE and hold.

MEMPHIS CENTER 134.65 316.15	UNICOM 122.8 (CTAF)
--	-------------------------------



2600		KUDCE	VGSi and RNAV glidepath not coincident (VGSi Angle 3.00/TCH 26).		4 NM Holding Pattern	
2600		JISIR	2000		011° → 2600	
RWY 19		3.00° TCH 40		191°		← 191°
5 NM		6.5 NM				
CATEGORY	A	B	C	D		
LP MDA	920-1	564 (600-1)	920-1½	564 (600-1½)		
LNAV MDA	940-1	584 (600-1)	940-1¾	584 (600-1¾)		
C CIRCLING	980-1	622 (700-1)	980-1¾	1780-3	622 (700-1¾)	1422 (1500-3)