

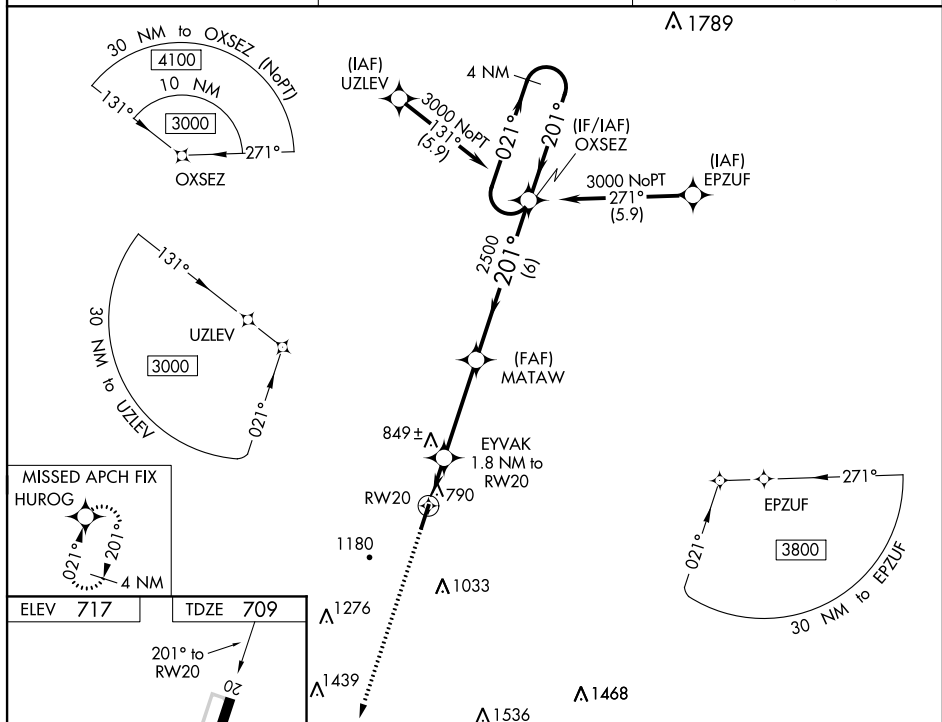
WAAS CH 56619 W20A	APP CRS 201°	Rwy Idg 5001 TDZE 709 Apt Elev 717
--	------------------------	---

RNAV (GPS) RWY 20
ELLINGTON (LUG)

NA For uncompensated Baro-VNAV systems, LNAV/VNAV NA below -16°C (4°F) or above 54°C (130°F). DME/DME RNP-0.3 NA. When local altimeter setting not received; use Nashville Intl altimeter setting and increase all DA 103 feet and all MDA 120 feet; increase LPV all Cats and LNAV/VNAV all Cats visibility $\frac{1}{2}$ mile and increase LNAV Cat C/D and Circling Cat B $\frac{1}{4}$ mile and Circling Cat C $\frac{1}{2}$ mile. Baro-VNAV and VDP NA when using Nashville Intl altimeter setting. Circling to Rwy 2 NA at night. Rwy 2 helicopter visibility reduction below 1 SM NA. Rwy 20 helicopter visibility reduction below $\frac{3}{4}$ SM NA.

MISSED APPROACH:
Climb to 3000 direct
HUROG and hold.

AWOS-3 135.775	MEMPHIS CENTER 128.15 323.125	UNICOM 122.8 (CTAF)
--------------------------	---	-------------------------------

[illegible]

LEWISBURG, TENNESSEE
Amdt 1A 22JUN17

35°30'N-86°48'W

ELLINGTON (LUG)

RNAV (GPS) RWY 20