

WAAS CH 48812 W18A	APP CRS 184°	Rwy Idg TDZE Apt Elev	4753 609 614
--	------------------------	-----------------------------	---

RNAV (GPS) RWY 18

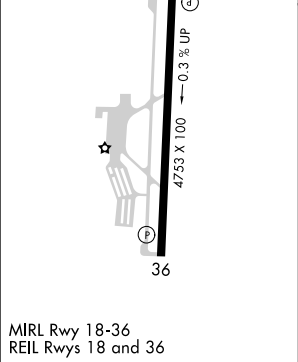
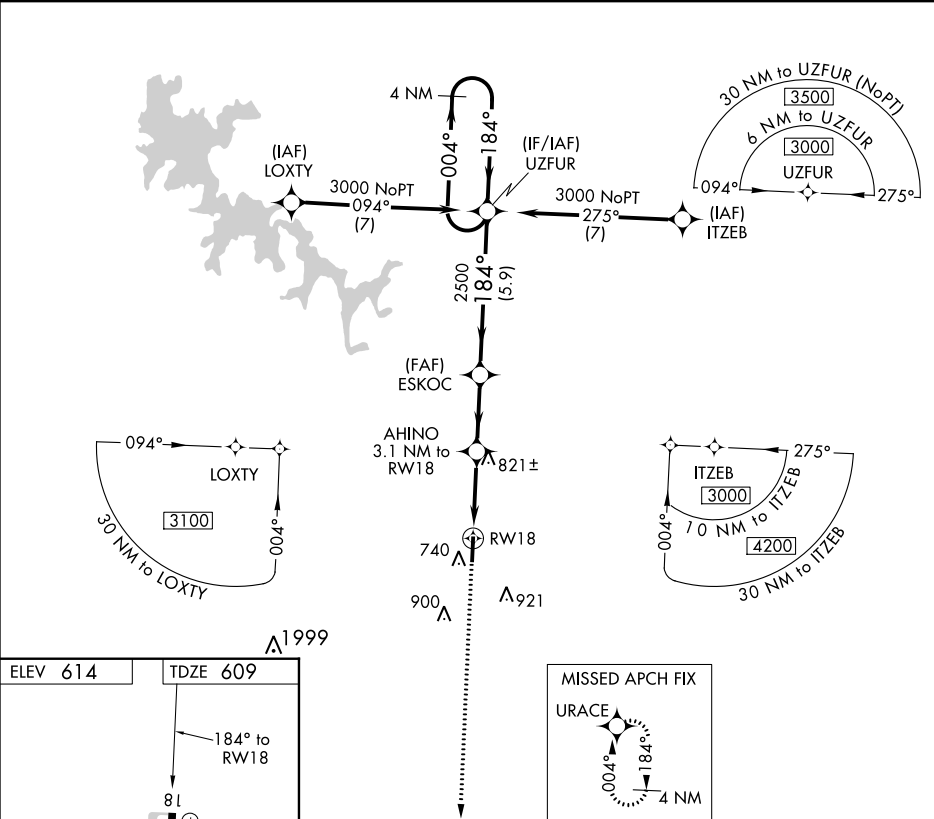
MURFREESBORO MUNI (MBT)

▼

For uncompensated Baro-VNAV systems, LNAV/VNAV NA below -16°C (4°F) or above 54°C (130°F). DME/DME RNP-0.3 NA.

MISSED APPROACH:
Climb to 3000 direct
URACE and hold.

AWOS-3 133.975	NASHVILLE APP CON 118.4 360.7	GCO 135.075	UNICOM 123.075 (CTAF)
--------------------------	---	-----------------------	---------------------------------



3000 URACE				VGSI and descent angles not coincident (VGSI Angle 3.00/TCH 18).				4 NM Holding Pattern			
URACE				AHINO 3.1 NM to RW18				ESKOC 2500			
RW18				*1.4 NM to RW18				*LNAV only. 2500			
1.4				1.7 NM				2.7 NM			
A				B				C			
LPV DA				859-3/4				250 (300-3/4)			
LNAV/VNAV DA				898-7/8				289 (300-7/8)			
LNAV MDA				1080-1				471 (500-1)			
CIRCLING				1080-1				466 (500-1)			
								1080-1 3/8			
								471 (500-1 3/8)			
								1280-1 3/4			
								666 (700-1 3/4)			