

VORTAC RQZ	APP CRS	Rwy Idg	5010
112.2	313°	TDZE	665
Chan 59		Apt Elev	689

VOR/DME RWY 34

ABERNATHY FIELD (GZS)

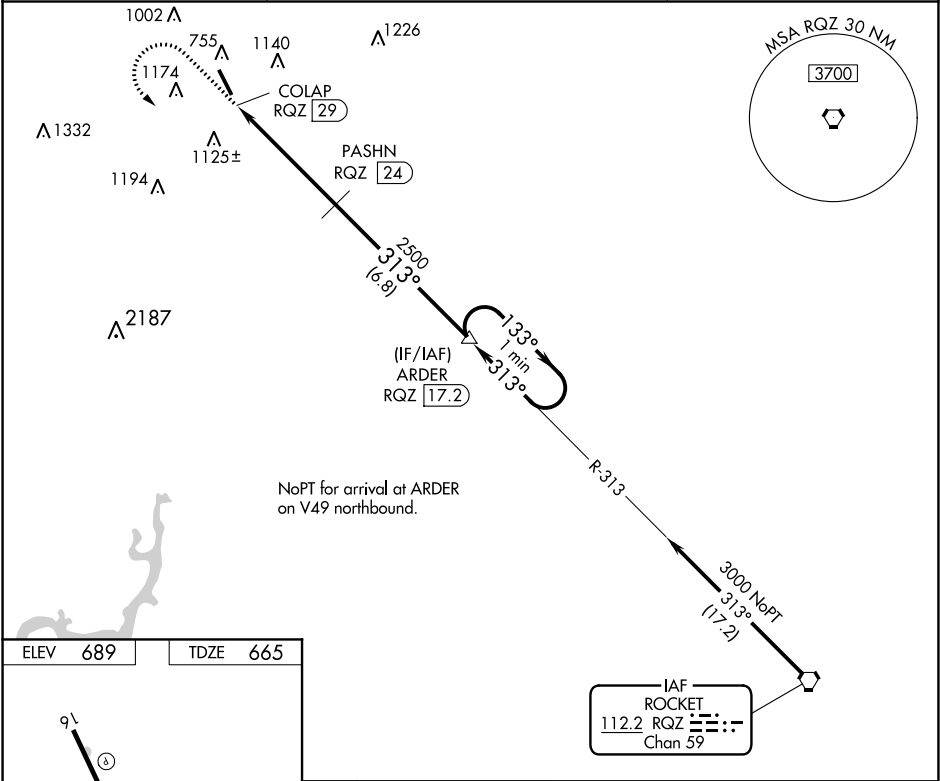
▼

NA

When local altimeter setting not received, use Huntsville Executive Airport/ Tom Sharp Jr Field altimeter setting and increase all MDA 100 feet and increase S-34 Cats A/B visibility ¼ mile and Cats C/D visibility ½ mile; increase Circling Cat B visibility ¼ mile and Cat C visibility ½ mile. Night landing: Rwy 16 NA. Helicopter visibility reduction below ¾ SM NA.

MISSED APPROACH: Climb to 2000 then climbing left turn to 3000 on RQZ VORTAC R-313 to ARDER/RQZ 17.2 DME and hold.

AWOS-3	MEMPHIS CENTER	UNICOM
118.275	125.85 379.25	122.8 (CTAF)



ELEV 689

TDZE 665

2000

3000

RQZ R-313

ARDER

ARDER RQZ 17.2

One Minute Holding Pattern

COLAP RQZ 29

PASHN RQZ 24

ARDER RQZ 17.2

313°

133°

3000

3.11°

TCH 40

6.8 NM

VGSI and descent angles not coincident (VGSI Angle 3.00/TCH 28).

CATEGORY	A	B	C	D
S-34	1520-1 855 (900-1)	1520-1¼ 855 (900-1¼)	1520-2½ 855 (900-2½)	855 (900-2½)
CIRCLING	1520-1¼ 831 (900-1¼)	831 (900-1¼)	1520-2½ 831 (900-2½)	1640-3 951 (1000-3)

MIRL Rwy 16-34

REIL Rwy 16 and 34