

NDB IOB

210

APP CRS

217°

Rwy Idg

5000

TDZE

1007

Apt Elev

1019

MOUNT STERLING-MONTGOMERY COUNTY (IOB)

NDB RWY 21

⚠

NA

When local altimeter setting not received, use Lexington altimeter setting and increase all MDA 80 feet and increase all visibilities ¼ mile.
Helicopter visibility reduction below ¾ SM NA.

MISSED APPROACH: Climb to 2900 in IOB NDB holding pattern.

AWOS-3

120.675

LEXINGTON APP CON

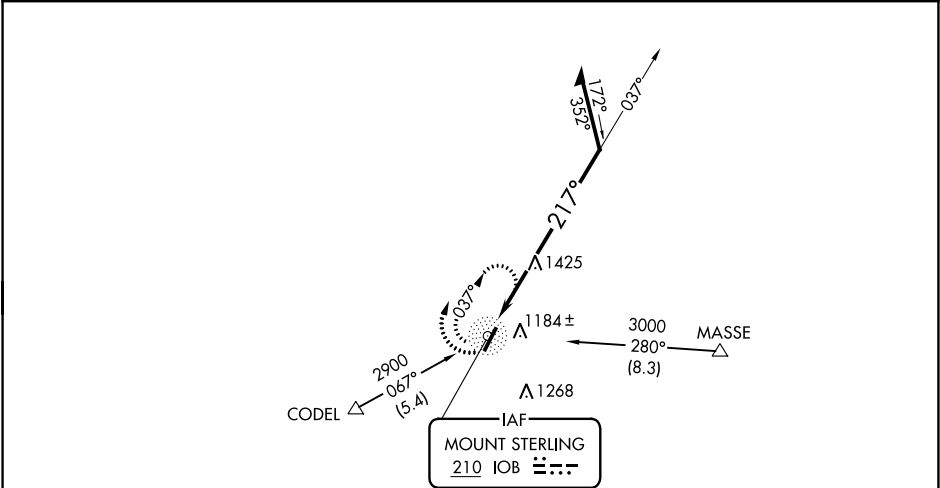
120.15 259.3

GCO

121.72

UNICOM

122.8 (CTAF) 0



△ 2049

ELEV 1019

TDZE 1007

217° to IOB NDB

5000 X 75

0.75 UP

3

MIRL Rwy 3-21 0

REIL Rws 3 and 21 0

2900

IOB

IOB NDB

037°

217°

2900

Remain within 10 NM

CATEGORY	A	B	C	D
S-21	1780-1 773 (800-1)	1780-1¼ 773 (800-1¼)	1780-2½	773 (800-2½)
CIRCLING	1780-1 761 (800-1)	1780-1¼ 761 (800-1¼)	1780-2½	761 (800-2½)

MSA IOB 25 NM

3600

SE-1, 03 DEC 2020 to 31 DEC 2020

SE-1, 03 DEC 2020 to 31 DEC 2020