

WAAS Ch 42626 W23A	APP CRS 232°	Rwy Idg TDZE Apt Elev	6202 568 577
--	------------------------	-----------------------------	---

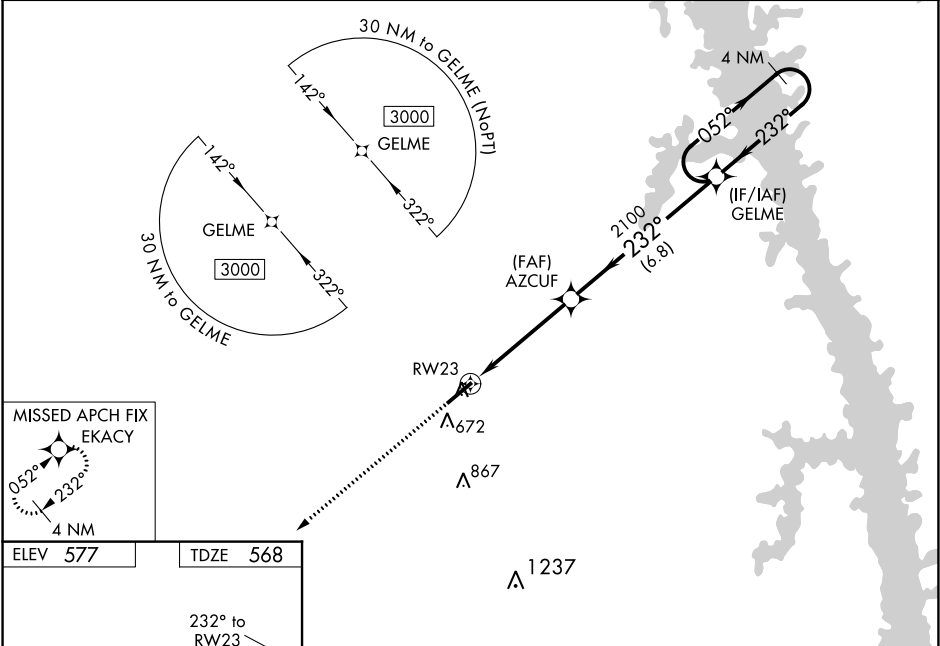
RNAV (GPS) RWY 23
KYLE-OAKLEY FIELD (CEY)

A DME/DME RNP-0.3 NA. Baro-VNAV and VDP NA with Mayfield altimeter setting. When local altimeter setting not received use Mayfield altimeter setting: increase all DA/MDA 40 feet, and increase LPV, LNAV/VNAV all Cats, and LNAV Cats C and D visibility $\frac{1}{8}$ mile. For inop ODALS, increase LPV and LNAV/VNAV all Cats, and LNAV Cats C and D visibility $\frac{1}{4}$ mile. Helicopter visibility reduction below $\frac{3}{4}$ SM NA. For uncompensated Baro-VNAV systems, LNAV/VNAV NA below -16°C (4°F) or above 54°C (130°F).

ODALS

MISSED APPROACH: Climb to 3000 direct EKACY and hold.

AWOS-3 119.975	MEMPHIS CENTER 133.65 292.15	UNICOM 122.7 (CTAF)
--------------------------	--	-------------------------------



ELEV 577 TDZE 568

3000 EKACY

VGSI and RNAV glidepath not coincident (VGSI Angle 3.50/TCH 38).

4 NM Holding Pattern

*LNAV only.

AZCUF

RW23

GP 3.00° TCH 40

CATEGORY	A	B	C	D
LPV DA		859- $\frac{7}{8}$	291 (300- $\frac{7}{8}$)	
LNAV/VNAV DA		861- $\frac{7}{8}$	293 (300- $\frac{7}{8}$)	
LNAV MDA	980- $\frac{3}{4}$	412 (500- $\frac{3}{4}$)	980-1	412 (500-1)
CIRCLING	1000-1 423 (500-1)	1040-1 463 (500-1)	1040-1 $\frac{1}{2}$ 463 (500-1 $\frac{1}{2}$)	1180-2 603 (700-2)

SE-1, 03 DEC 2020 to 31 DEC 2020

SE-1, 03 DEC 2020 to 31 DEC 2020