

WAAS CH <b>58040</b> <b>W07A</b>	APP CRS <b>071°</b>	Rwy Idg TDZE <b>1255</b> Apt Elev <b>1255</b>
--	------------------------	---

RNAV (GPS) RWY 7

HAWKINS COUNTY (RVN)

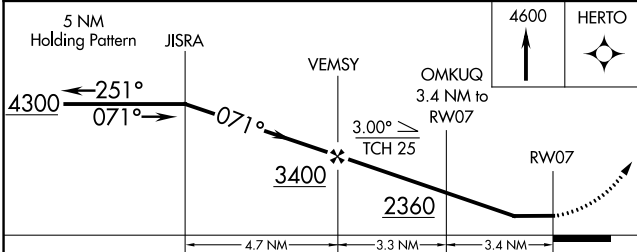
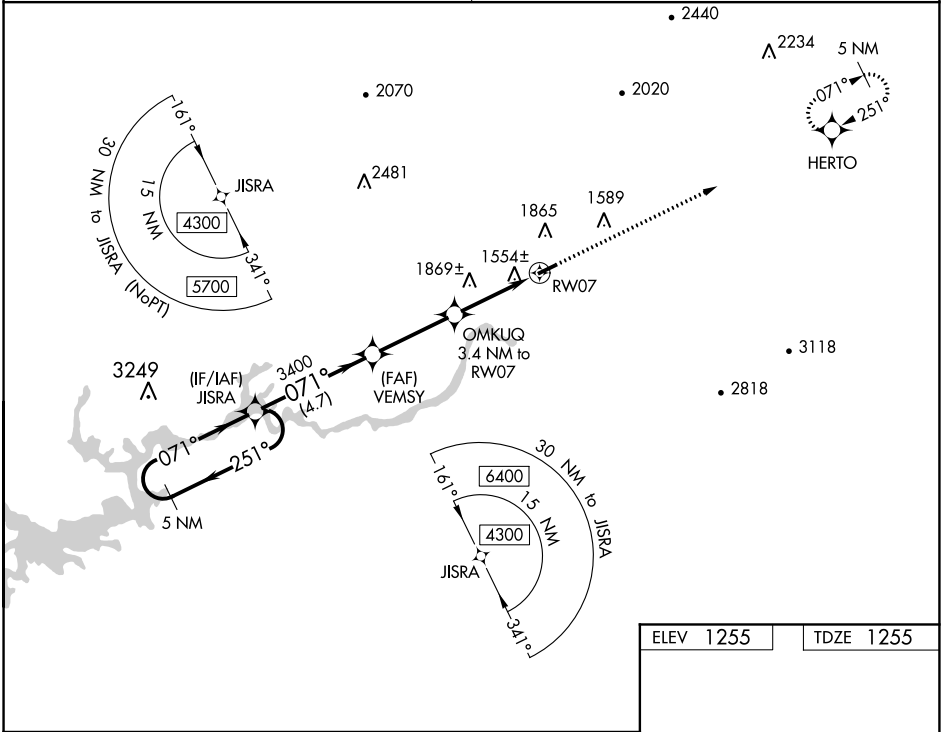
▼

▲ NA

DME/DME RNP-0.3 NA. Procedure NA at night. Obtain local altimeter setting on CTAF; when not recieved, use Tri-Cities altimeter setting and increase all MDA 120 feet, increase LP Cat C visibility ½ SM, increase LNAV Cat A and Circling Cat B visibility ¼ SM. Rwy 7, 25 helicopter visibility reduction below 1 SM NA.

MISSED APPROACH: Climb to 4600 direct HERTO and hold, continue climb-in-hold to 4600.

TRI CITY APP CON ★ <b>128.05 317.5</b>	UNICOM <b>122.8 (CTAF)</b>
---	-------------------------------



CATEGORY	A	B	C	D
LP MDA	1820-1	565 (600-1)	1820-1½ 565 (600-1½)	NA
LNAV MDA	2040-1 785 (800-1)	2040-1¼ 785 (800-1¼)	2040-2½ 785 (800-2½)	NA
CIRCLING	2180-1¼	925 (1000-1¼)	2320-3 1065 (1100-3)	NA

ELEV 1255

TDZE 1255

MIRL Rwy 7-25  
REIL Rwys 7 and 25