

COPTER RNAV (GPS) Y RWY 23

APCH CRS	Rwy Idg	5000
227°	THRE	573
	Arpt Elev	595

AL-6373 [USA]

SABRE AAF (FORT CAMPBELL) (KEOD)

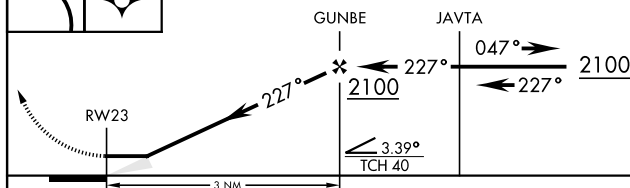
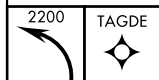
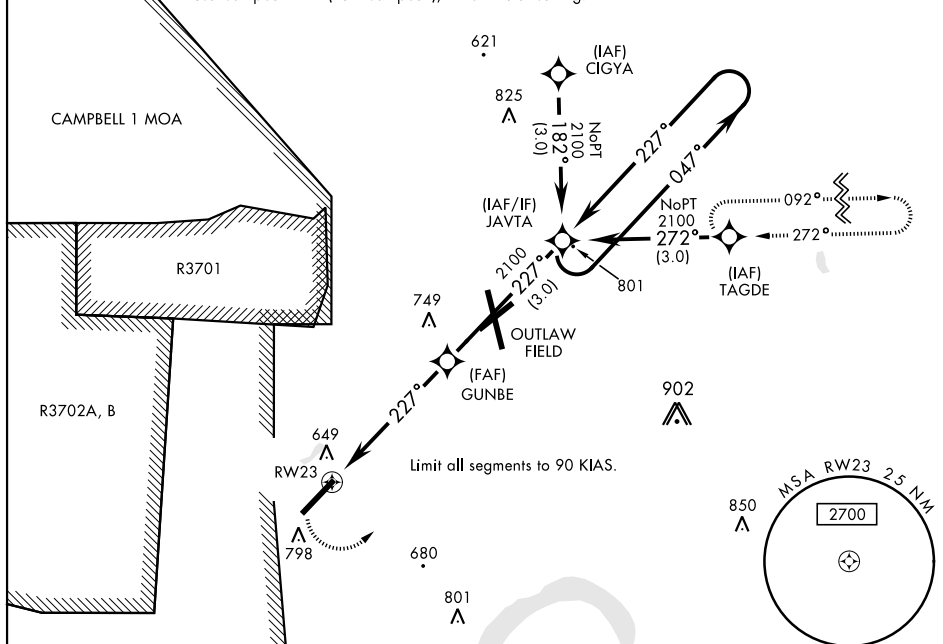
RNP APCH - DME/DME RNP-0.3 NA.

RADAR required.

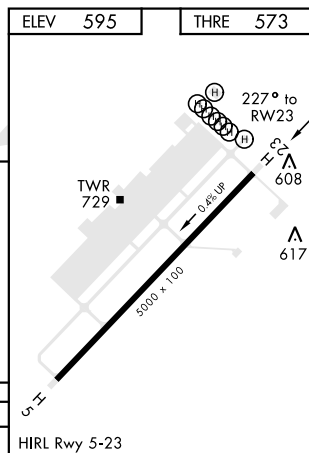
MISSED APPROACH: Climbing left turn to 2200 direct TAGDE and hold.

ATIS 306.5	CAMPBELL APP CON 134.35 307.025	SABRE TOWER ★ 124.675 290.45	GND CON 142.975 267.3	CLNC DEL 237.6	EAGLE RADIO 285.7	ASR
---------------	------------------------------------	---------------------------------	--------------------------	-------------------	----------------------	-----

When local altimeter setting not received,
use Campbell AAF (Fort Campbell), KY altimeter setting.



CATEGORY	COPTER
LNAV MDA	1020-½ 447 (500-½)



COPTER RNAV (GPS) Y RWY 23