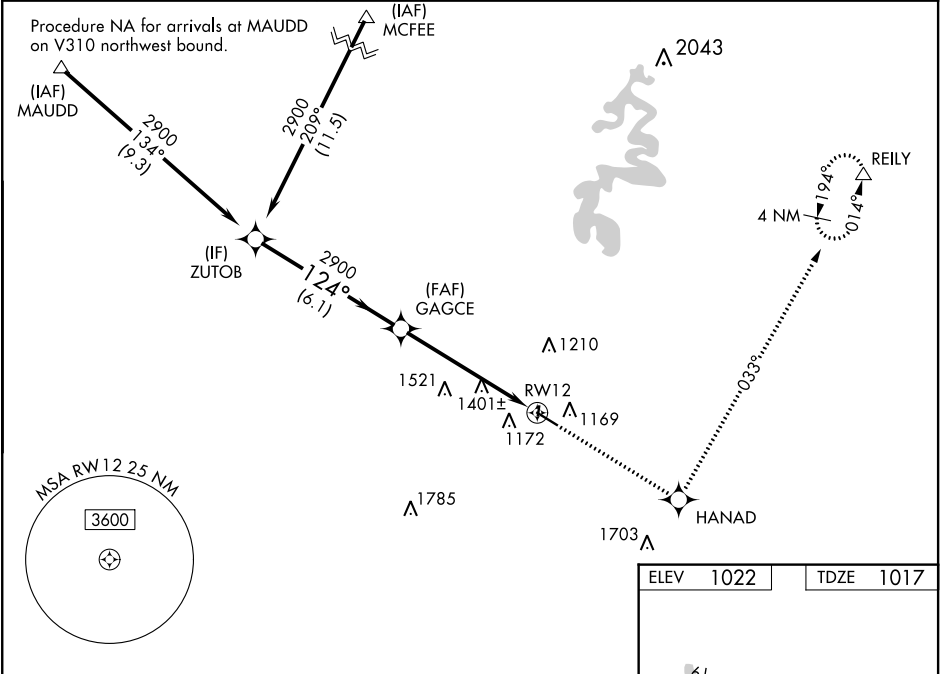


WAAS CH <b>93706</b> <b>W12A</b>	APP CRS <b>124°</b>	Rwy Idg TDZE <b>1017</b> Apt Elev <b>1022</b>
--	------------------------	---

RNAV (GPS) RWY 12  
STUART POWELL FIELD (DVK)

RNP APCH.	When local altimeter setting not received, use Lexington altimeter setting: increase all DA/MDA 80 feet; increase LPV all Cats and LNAV/VNAV all Cats and LNAV all Cats visibility ¼ SM. For uncompensated Baro-VNAV systems, LNAV/VNAV NA below -17° C or above 47° C. Baro-VNAV NA when using Lexington altimeter setting. Rwy 12 helicopter visibility reduction below ¾ SM NA.	MISSED APPROACH: Climb to 3000 direct HANAD and left turn on 033° track to REILY and hold.
-----------	---	--

AWOS-3 <b>128.325</b>	LEXINGTON APP CON <b>120.15 259.3</b>	UNICOM <b>122.8 (CTAF) 0</b>
--------------------------	--	---------------------------------



VGSI and RNAV glidepath not coincident (VGSI 3.50/TCH 35).				
Procedure Turn NA				
GP 3.00° TCH 35				
ZUTOB 2900 124° GAGCE 2900 RW12				
6.1 NM 5.7 NM				
CATEGORY	A	B	C	D
LPV DA	1357-1¼ 340 (400-1¼)			
LNAV/VNAV DA	1785-2¾ 768 (800-2¾)			
LNAV MDA	1660-1	643 (700-1)	1660-1¾ 643 (700-1¾)	1660-2 643 (700-2)

