

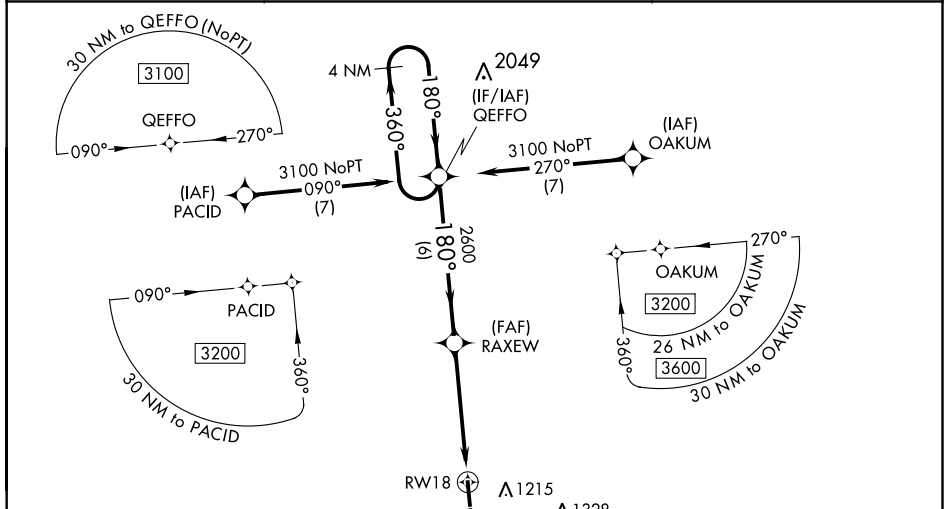
WAAS CH <b>63114</b> <b>W18A</b>	APP CRS <b>180°</b>	Rwy Idg <b>5001</b> TDZE <b>978</b> Apt Elev <b>1003</b>
--	------------------------	--

RNAV (GPS) RWY 18  
CENTRAL KENTUCKY RGNL (RGA)

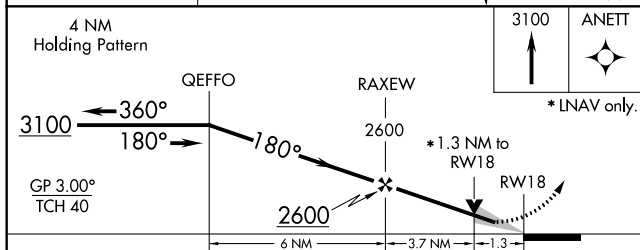
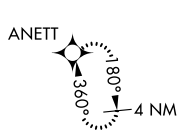
**▼** For uncompensated Baro-VNAV systems, LNAV/VNAV NA below -16°C (4°F) or above 54°C (130°F). DME/DME RNP-0.3 NA. When local altimeter setting not received, use Lexington altimeter setting and increase LPV DA to 1295 feet, LNAV/VNAV DA to 1341 feet and all MDA 80 feet; increase LPV all Cats visibility ¼ mile; LNAV/VNAV all Cats and LNAV Cats C and D ¼ mile and Circling visibility Cat C ⅜ mile, Cat D ¼ mile. VDP and Baro-VNAV NA when using Lexington altimeter setting.


**MISSED APPROACH:**  
Climb to 3100 direct  
ANETT and hold.

AWOS-3 <b>119.625</b>	LEXINGTON APP CON <b>120.15 259.3</b>	UNICOM <b>122.725 (CTAF) 0</b>
--------------------------	--	-----------------------------------



MISSED APCH FIX



CATEGORY		A	B	C	D
LPV	DA	1228- $\frac{7}{8}$		250 (300- $\frac{7}{8}$ )	
RNAV/ VNAV	DA	1274-1		296 (300-1)	
RNAV	MDA	1440-1 462 (500-1)		1440-1 $\frac{3}{8}$ 462 (500-1 $\frac{3}{8}$ )	
 CIRCLING		1440-1 437 (500-1)	1520-1 517 (600-1)	1520-1 $\frac{1}{2}$ 517 (600-1 $\frac{1}{2}$ )	1780-2 $\frac{1}{2}$ 777 (800-2 $\frac{1}{2}$ )

