

VOR/DME HYK

112.6

Chan 73

APP CRS

161°

Rwy Idg

5001

TDZE

978

Apt Elev

1003

VOR RWY 18

CENTRAL KENTUCKY RGNL (RGA)

DME required.

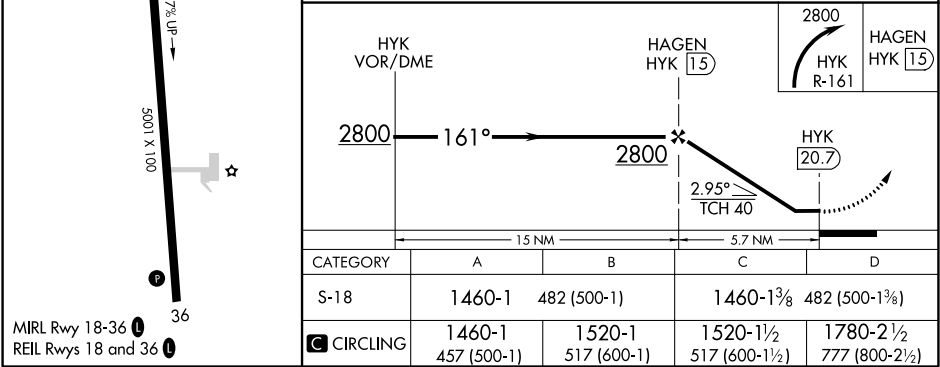
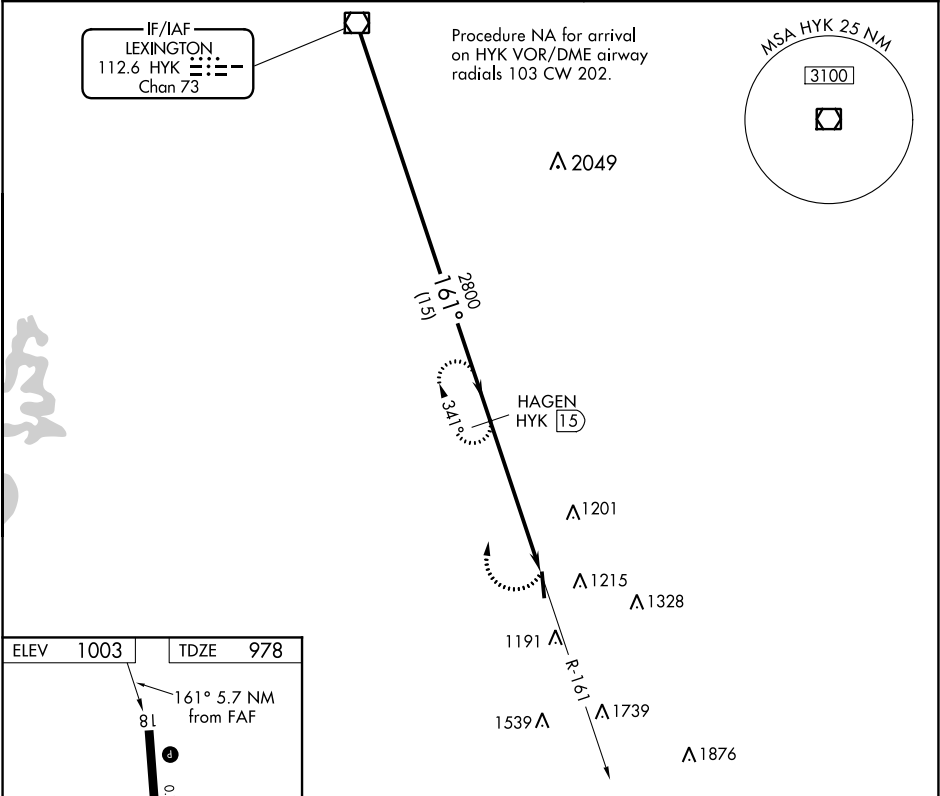
▼

▲

When local altimeter setting not received, use Lexington altimeter setting and increase all MDA 80 feet; increase S-18 Cats C and D visibility ¼ SM; Circling Cat C ½ SM and Circling Cat D ¼ SM.

MISSED APPROACH: Climbing right turn to 2800 on HYK VOR/DME R-161 to HAGEN/15 DME and hold.

AWOS-3 119.625	LEXINGTON APP CON 120.15 259.3	UNICOM 122.725 (CTAF) 0
-------------------	-----------------------------------	----------------------------



SE-1, 03 DEC 2020 to 31 DEC 2020

SE-1, 03 DEC 2020 to 31 DEC 2020