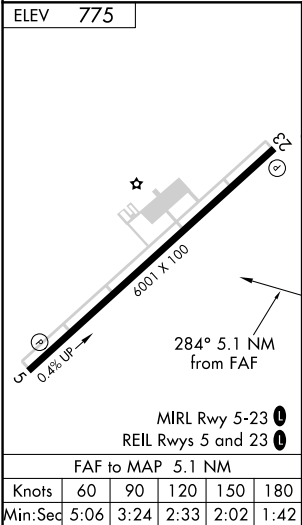
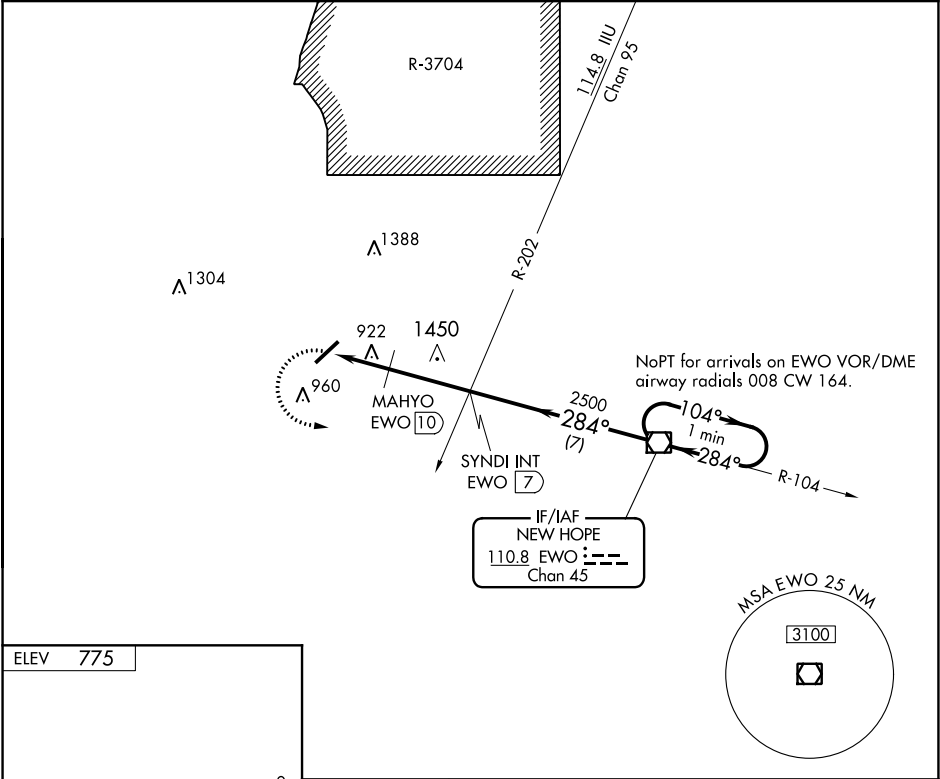


VOR/DME EWO <b>110.8</b> Chan <b>45</b>	APP CRS <b>284°</b>	Rwy Idg TDZE Apt Elev <b>N/A</b> <b>N/A</b> <b>775</b>	VOR-A ADDINGTON FIELD (EKK)
---	------------------------	---	--------------------------------

<b>NA</b> If local altimeter setting not received, use Louisville Muhammad Ali Intl altimeter setting and increase all MDAs 120 feet.	MISSED APPROACH: Climbing left turn to 2500 direct to EWO VOR/DME and hold.
---	---

AWOS-3 <b>121.025</b>	LOUISVILLE APP CON <b>132.075 327.0</b>	CLNC DEL <b>119.45</b>	UNICOM <b>122.8 (CTAF)</b>
--------------------------	--	---------------------------	-------------------------------



2500	EWO	SYNDI INT EWO 7	EWO VOR/DME	One Minute Holding Pattern
MAHYO EWO 10	2500	284°	104°	2500
EWO 12.1	1700*	284°	284°	
*1820 when using Louisville Intl altimeter setting.				
2.1 NM 3 NM 7 NM				
CATEGORY	A	B	C	D
CIRCLING	1700-1¼ 925 (1000-1¼)		1700-2¾ 925 (1000-2¾)	1700-3 925 (1000-3)
MAHYO FIX MINIMUMS				
CIRCLING	1240-1 465 (500-1)	1260-1 485 (500-1)	1260-1½ 485 (500-1½)	1360-2 585 (600-2)

SE-1, 03 DEC 2020 to 31 DEC 2020

SE-1, 03 DEC 2020 to 31 DEC 2020