

WAAS CH <b>78325</b> <b>W02A</b>	APP CRS <b>018°</b>	Rwy Idg TDZE Apt Elev	<b>6001</b> <b>484</b> <b>501</b>
--	------------------------	-----------------------------	---

RNAV (GPS) RWY 2

JOHN C TUNE (JWN)

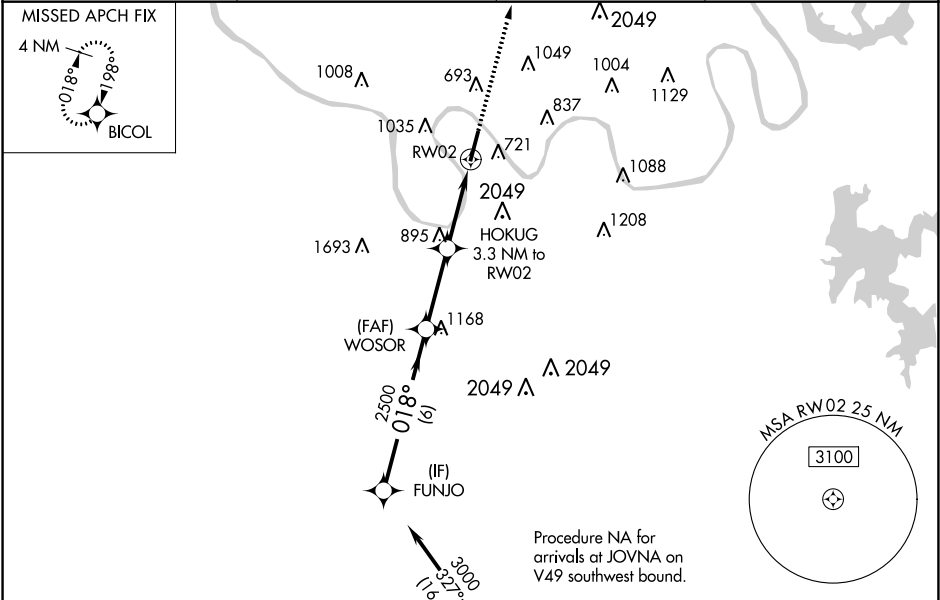
▼

▲ NA

For uncompensated Baro-VNAV systems, LNAV/VNAV NA below -15°C (5°F) or above 54°C (130°F). Circling NA E of Rwy 2-20. Baro-VNAV and VDP NA when using Nashville Intl altimeter setting. DME/DME RNP-0.3 NA. When local altimeter setting not received, use Nashville Intl altimeter setting and increase all DAs 39 feet and all MDAs 40 feet; increase LPV visibility all Cats ⅓ SM, LNAV visibility Cat B ¼ SM.

MISSED APPROACH:  
Climb to 3000 direct BICOL and hold.

AWOS-3 <b>127.075</b>	NASHVILLE APP CON <b>119.35 372.0</b>	CLNC DEL <b>124.55</b>	UNICOM <b>122.7 (CTAF)</b>
--------------------------	--	---------------------------	-------------------------------



ELEV 501 TDZE 484

3000 BICOL

\* LNAV only.

GP 3.00°  
TCH 40

FUNJO 3000 018°  
WOSOR 2500  
HOKUG 3.3 NM to RWY 2  
RWY 2

\* 1540  
\* 2.1 NM to RWY 2

6 NM 3 NM 1.2 NM 2.1 NM

A B C D

CATEGORY	A	B	C	D
LPV DA	734-7/8 250 (300-7/8)			
LNAV/VNAV DA	1079-2 1/2 595 (600-2 1/2)			
LNAV MDA	1160-1	676 (700-1)	1160-2	676 (700-2)
CIRCLING	1200-1	699 (700-1)	1340-2 3/4	839 (900-2 3/4)

6001 X 100  
07° UP  
018° to RWY 2

MIRL Rwy 2-20  
REIL Rwy 2 and 20