

WAAS CH 86625 W20A	APP CRS 198°	Rwy Idg TDZE Apt Elev	6001 501 501
--	------------------------	-----------------------------	---

RNAV (GPS) RWY 20

JOHN C TUNE (JWN)

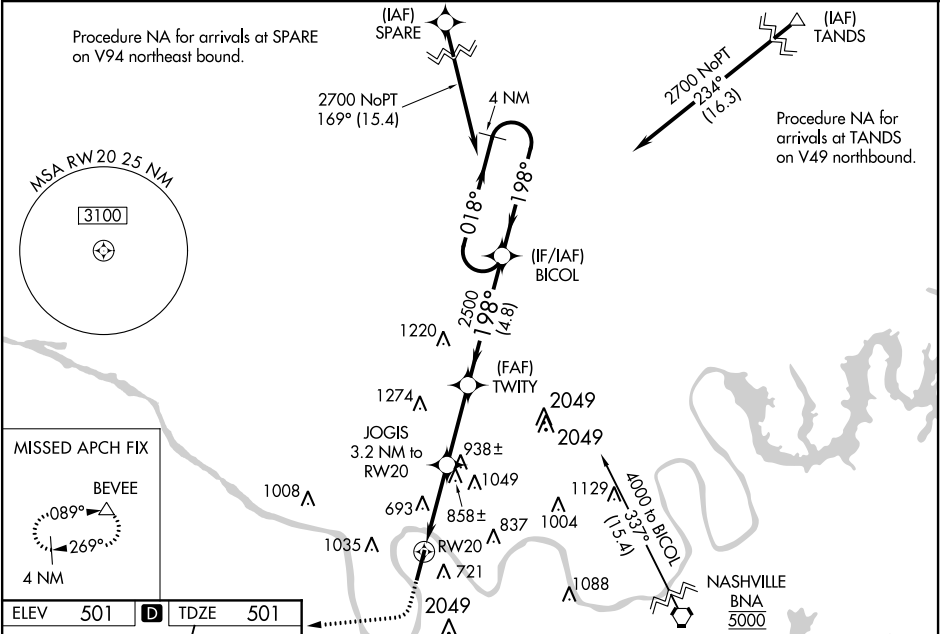
▽

NA

For uncompensated Baro-VNAV systems, LNAV/VNAV NA below -15°C (5°) or above 54°C (130°F). DME/DME RNP-0.3 NA. When local altimeter setting not received, use Nashville Intl altimeter setting and increase all DA 40 feet and all visibilities 1⁄8 mile; increase all MDA 40 feet and LNAV Cats C and D visibility 1⁄8 mile. Circling NA east of Rwy 2-20. Baro-VNAV and VDP NA when using Nashville Intl altimeter setting. Helicopter visibility reduction below 3⁄4 SM NA.

MISSED APPROACH:
Climb to 1200 then
climbing right turn to
3000 direct BEVEE
and hold.

AWOS-3 127.075	NASHVILLE APP CON 119.35 372.0	CLNC DEL 124.55	UNICOM 122.7 (CTAF)
--------------------------	--	---------------------------	-------------------------------



ELEV 501

D

TDZE 501

198° to RW20

20

6001 x 100

0.7% UP

2

MIRL Rwy 2-20

REIL Rwy 2 and 20

1200

3000

BEVEE

△

*LNAV only.

JOGIS

3.2 NM to RW20

*1.8 NM to RW20

RW20

*1560

2500

198°

2500

198°

018°

2700

4 NM Holding Pattern

BICOL

GP 3.00°

TCH 40

CATEGORY	A	B	C	D
LPV DA	856-1¼		355 (400-1¼)	
LNAV/VNAV DA	1003-1¾		502 (600-1¾)	
LNAV MDA	1120-1	619 (700-1)	1120-1¾	619 (700-1¾)
CIRCLING	1200-1	699 (700-1)	1340-2½ 839 (900-2½)	1340-2¾ 839 (900-2¾)