

WAAS CH <b>99419</b> <b>W01A</b>	APP CRS <b>014°</b>	Rwy Idg <b>5507</b> TDZE <b>495</b> Apt Elev <b>497</b>
--	------------------------	---

RNAV (GPS) RWY 1

CARROLL COUNTY (HZD)

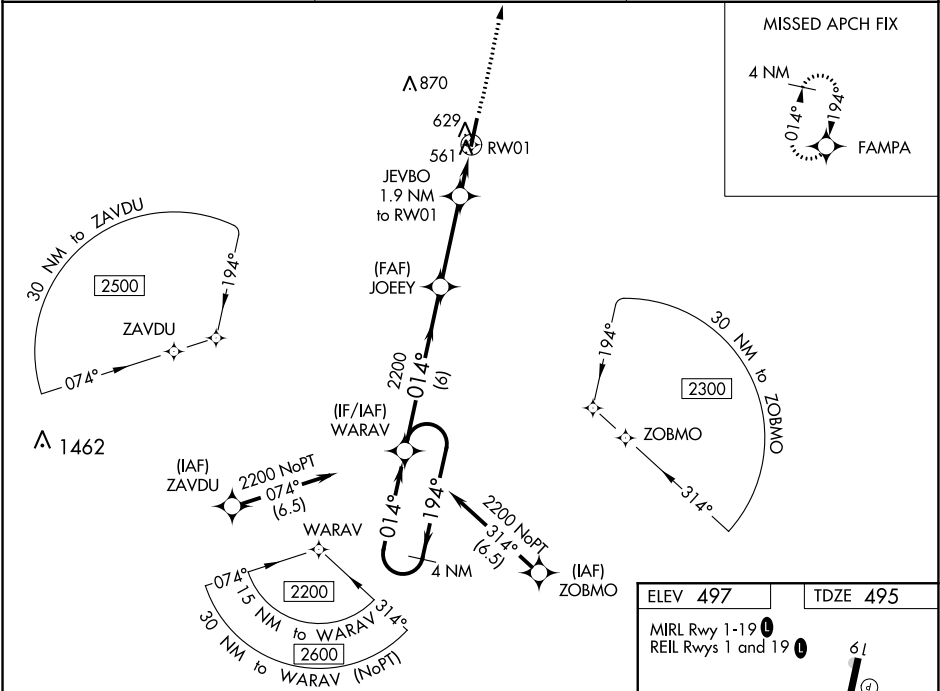
▼

▲ NA

For uncompensated Baro-VNAV systems, LNAV/VNAV NA below -15°C (5°F) or above 54°C (130°F). DME/DME RNP-0.3 NA. When local altimeter setting not received, use Mc Kellar-Sipes Rgnl altimeter setting and increase all DA 94 feet and all MDA 100 feet; increase LPV all Cats visibility ¼ mile, LNAV/VNAV all Cats visibility ⅓ mile, LNAV Cats C and D visibility ¼ mile, and Circling Cats C and D visibility ½ mile. VDP and Baro-VNAV NA with Mc Kellar-Sipes Rgnl altimeter setting. Helicopter visibility reduction below ¾ SM NA.

MISSED APPROACH: Climb to 2200 direct FAMPA and hold.

AWOS-3 <b>133.275</b>	MEMPHIS CENTER <b>134.65 316.15</b>	UNICOM <b>122.8 (CTAF) 0</b>
--------------------------	--	---------------------------------



4 NM Holding Pattern		VGSI and RNAV glidepath not coincident (VGSI Angle 3.00/TCH 26).		2200	FAMPA
2200 ← 194°		WARAV		JOEY	2200
GP 3.00° TCH 40°		2200 ← 014°		JEVBO	1.9 NM to RW01
		2200		*1.1 NM to RW01	
		6 NM		3.3 NM	
				0.8 NM	
				1.1 NM	
CATEGORY	A	B	C	D	
LPV DA	745-7/8		250 (300-7/8)		
LNAV/VNAV DA	810-1		315 (400-1)		
LNAV MDA	880-1	385 (400-1)	880-1 1/8	385 (400-1 1/8)	
CIRCLING	980-1	483 (500-1)	1220-2	1220-2 1/4	
			723 (800-2)	723 (800-2 1/4)	

