

WAAS CH 97634 W19A	APP CRS 194°	Rwy Idg 5507 TDZE 497 Apt Elev 497
--	------------------------	---

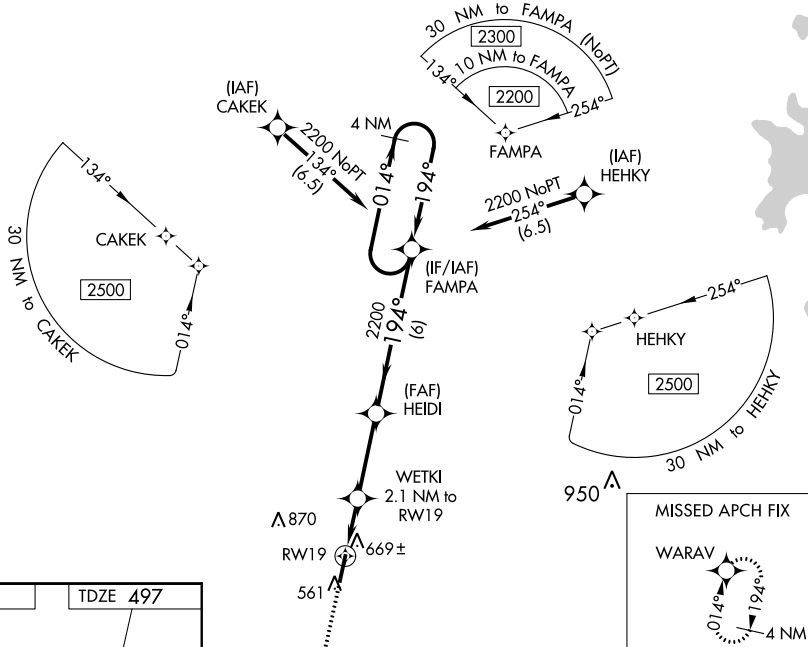
RNAV (GPS) RWY 19

CARROLL COUNTY (HZD)

V
Δ NA For uncompensated Baro-VNAV systems, LNAV/VNAV NA below -15°C (5°F) or above 54°C (130°F). DME/DME RNP-0.3 NA. When local altitude setting not received, use Mc Kellar-Sipes Rgnl altimeter setting and increase all DA 94 feet and all MDA 100 feet; increase LPV all Cats and LNAV/VNAV all Cats visibility $\frac{3}{8}$ mile, LNAV Cats C and D visibility $\frac{1}{4}$ mile, and Circling Cats C and D visibility $\frac{1}{2}$ mile. VDP and Baro-VNAV NA with Mc Kellar-Sipes Rgnl altimeter setting. Helicopter visibility reduction below $\frac{3}{8}$ SM NA.

MISSED APPROACH:
Climb to 2200 direct
WARAV and hold.

AWOS-3 133.275	MEMPHIS CENTER 134.65 316.15	UNICOM 122.8 (CTAF) 0
--------------------------	--	---------------------------------



ELEV 497

TDZE 497

194° to RW19

5507 x 100

MIRL Rwy 1-19

REIL Rwy 1 and 19

2200 VORTIS
WARAV
VGS and RNAV glidepath not coincident
(VGS Angle 4.00/TCH 28).

HEIDI
2200
FAMPA
4 NM Holding Pattern

*RNAV only.

WETKI
2.1 NM to RW19

*0.9 NM to RW19

RW19

*1200

0.9 NM 1.2 NM 3.1 NM 6 NM

194° 014° 194°

GP 3.00° TCH 40

CATEGORY	A	B	C	D
LPV DA	798-1	301 (400-1)		
RNAV/VNAV DA	933-1½	436 (500-1½)		
RNAV MDA	920-1 423 (500-1)	920-1¼ 423 (500-1¼)		
CIRCLING	980-1 483 (500-1)	1220-2 723 (800-2)	1220-2¼ 723 (800-2¼)	