

WAAS CH 93723 W01A	APP CRS 008°	Rwy Idg TDZE 436 Apt Elev 436
--	------------------------	---

RNAV (GPS) RWY 1

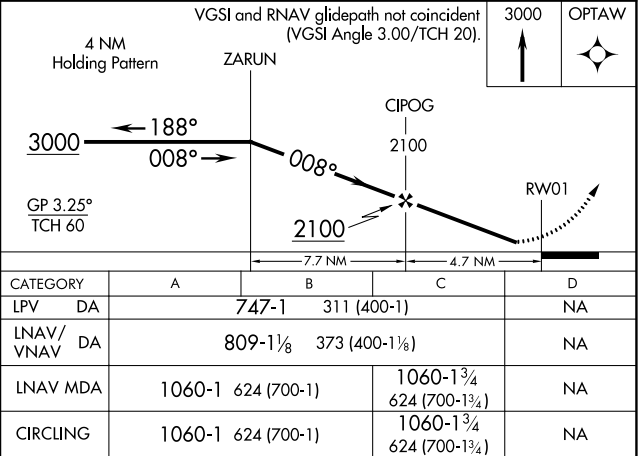
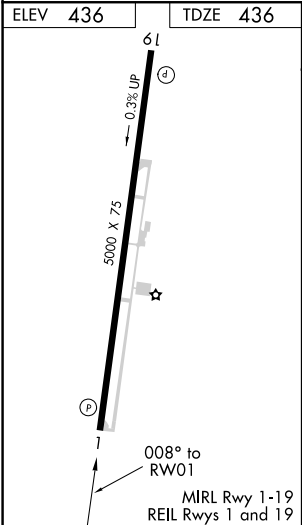
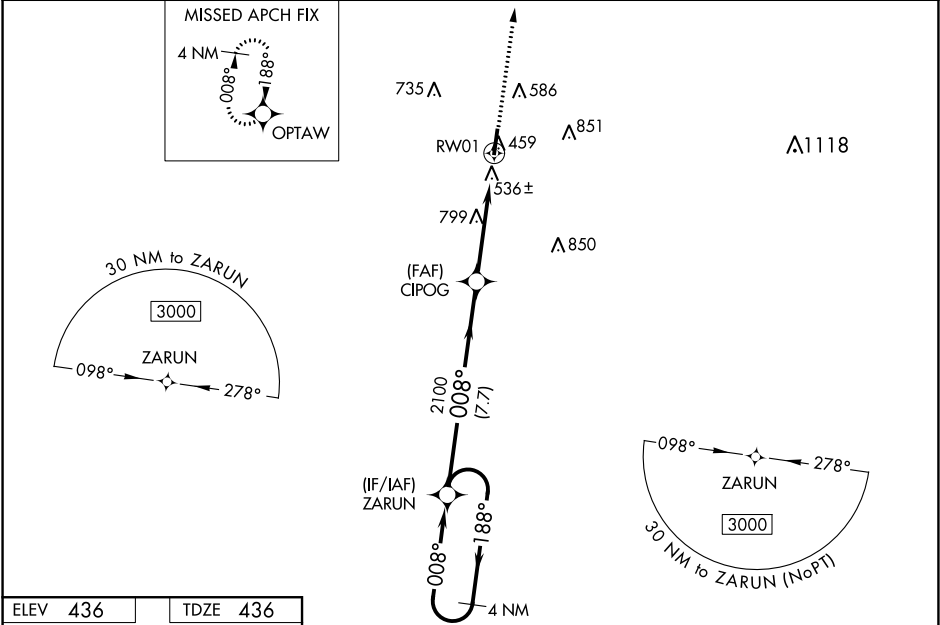
FAYETTE COUNTY (FYE)

NA

Baro-VNAV NA when using Memphis Intl altimeter setting. For uncompensated Baro-VNAV systems, LNAV/VNAV NA below -15°C (5°F) or above 54°C (130°F). DME/DME RNP-0.3 NA. When local altimeter setting not received, use Memphis Intl altimeter setting and increase all DA 84 feet, all MDA 100 feet. Increase LPV all Cats visibility ¼ mile, LNAV/VNAV all Cats ¼ mile and LNAV Cat C ¼ mile. Helicopter visibility reduction below ¾ SM NA.

MISSED APPROACH:
Climb to 3000 direct
OPTAW and hold.

AWOS-3 119.875	MEMPHIS APP CON 125.8 338.3	CTAF 122.9
--------------------------	---------------------------------------	----------------------



SE-1, 03 DEC 2020 to 31 DEC 2020

SE-1, 03 DEC 2020 to 31 DEC 2020