

WAAS CH <b>90526</b> <b>W21A</b>	APP CRS <b>207°</b>	Rwy Idg TDZE Apt Elev	<b>5003</b> <b>537</b> <b>537</b>
----------------------------------------	------------------------	-----------------------------	-----------------------------------------

RNAV (GPS) RWY 21

OHIO COUNTY (JQD)

RNP APCH.

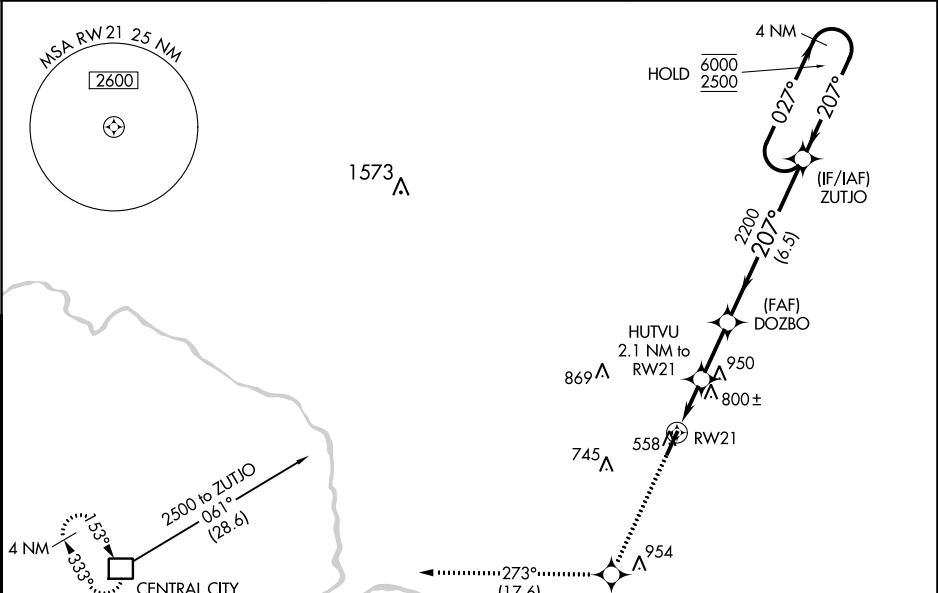
▼

▲

Baro-VNAV and VDP NA when using Owensboro altimeter setting. For uncompensated Baro-VNAV systems, LNAV/VNAV NA below -16°C or above 54°C. When local altimeter setting not received, use Owensboro altimeter setting and increase LPV DA to 858 feet, increase LNAV/VNAV DA to 1082 feet. Increase all MDA 80 feet, increase LNAV/VNAV visibilities all Cats ¼ SM, increase ENAV and Circling Cat C visibility ¼ SM.

MISSED APPROACH:  
Climb to 3000 direct  
VUSWO and on track  
273° to CCT DME  
and hold.

AWOS-3PT <b>132.1</b>	EVANSVILLE APP CON ★ <b>124.025 290.9</b>	UNICOM <b>122.8</b> (CTAF) <b>0</b>
--------------------------	----------------------------------------------	----------------------------------------



3000  
↑  
VUSWO

tr

273°

CCT

□

\*LNAV only.

HUTVU 2.1 NM to RW21

DOZBO

ZUTJO 4 NM Holding Pattern

1.3 NM

0.8 NM

2.3 NM

6.5 NM

207°

027°

207°

6000

2500

\*1360

2200

GP 3.50°

TCH 47

CATEGORY	A	B	C	D
LPV DA	787-1 250 (300-1)		807-1 270 (300-1)	NA
LNAV/VNAV DA	1011-1⅜	474 (500-1⅝)		NA
LNAV MDA	1060-1 523 (600-1)		1060-1½ 523 (600-1½)	NA
CIRCLING	1060-1 523 (600-1)	1100-1 563 (600-1)	1300-2¼ 763 (800-2¼)	NA

207° to RW21

3003 x 75

MIRL Rwy 3-21 **0**

REIL Rws 3 and 21