

WAAS CH <b>97316</b> <b>W19A</b>	APP CRS <b>193°</b>	Rwy Idg TDZE Apt Elev	<b>6000</b> <b>488</b> <b>488</b>
--	------------------------	-----------------------------	---

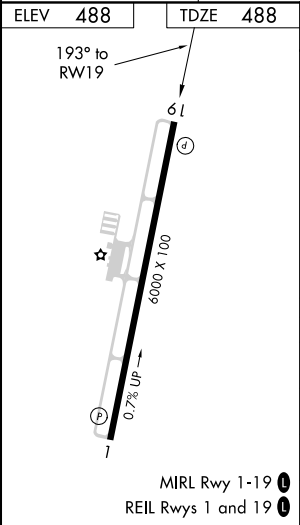
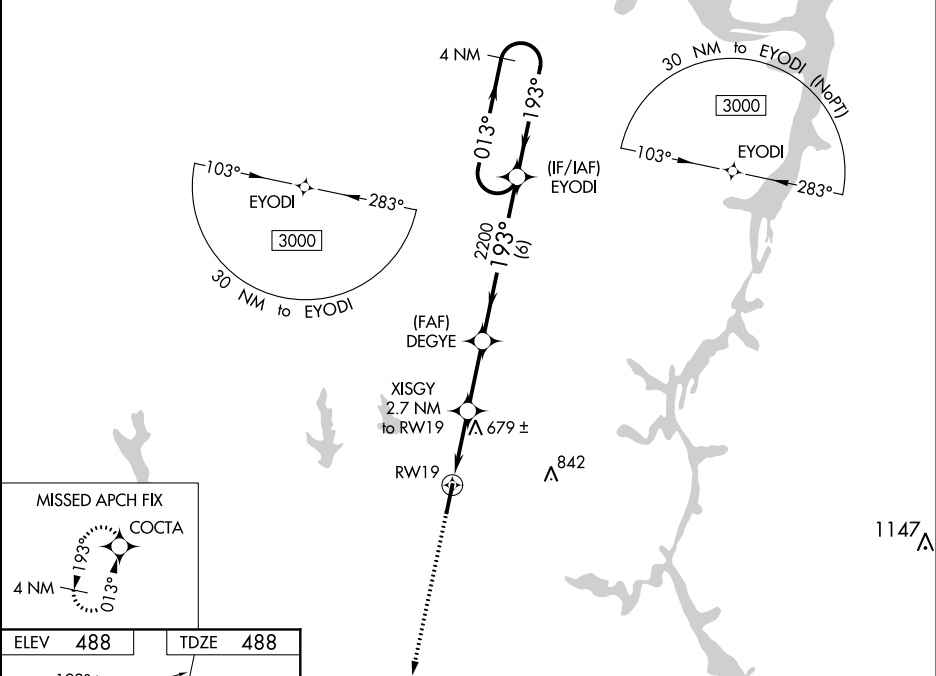
RNAV (GPS) RWY 19

BEECH RIVER RGNL (PVE)

⚠ For uncompensated Baro-VNAV systems, LNAV/VNAV NA below -15°C (5 °F) or above 54 °C (130°F).  
DME/DME RNP-0.3 NA. When local altimeter setting not received, use Jackson altimeter setting: increase LPV all Cats DA to 828 and all Cats visibility ¼ mile; increase LNAV/VNAV all Cats DA to 890 and all Cats visibility ⅓ mile; increase all MDA 100 feet and LNAV Cats C/D and Circling Cat C visibility ¼ mile and Circling Cat D visibility ½ mile. VDP and Baro-VNAV NA when using Jackson altimeter setting.

MISSED APPROACH:  
Climb to 3000 direct  
COCTA and hold.

AWOS-3 <b>118.125</b>	MEMPHIS CENTER <b>125.85 379.25</b>	UNICOM <b>123.0 (CTAF) 0</b>
--------------------------	--	---------------------------------



3000

↑

COCTA

✦

VGSI and RNAV glidepath not coincident  
(VGSI Angle 3.29/TCH 35).

4 NM  
Holding Pattern

\*LNAV only

RW19

1.2 NM

XISGY  
2.7 NM  
to RW19

1.2 NM  
to RW19

DEGYE  
2200

193°

1380

2200

EYODI

013°

193°

3000

GP 3.00  
TCH 40

1.2 NM

1.5 NM

2.6 NM

6 NM

CATEGORY	A	B	C	D
LPV DA	738-7 <sup>8</sup> / <sub>8</sub>		250 (300-7 <sup>8</sup> / <sub>8</sub> )	
LNAV/VNAV DA	800-1		312 (400-1)	
LNAV MDA	940-1	452 (500-1)	940-1 <sup>3</sup> / <sub>8</sub>	452 (500-1 <sup>3</sup> / <sub>8</sub> )
CIRCLING	940-1 452 (500-1)	980-1 492 (500-1)	1000-1 <sup>1</sup> / <sub>2</sub> 512 (600-1 <sup>1</sup> / <sub>2</sub> )	1200-2 <sup>1</sup> / <sub>4</sub> 712 (800-2 <sup>1</sup> / <sub>4</sub> )