

APP CRS	Rwy Idg	4000
038°	TDZE	1034
	Apt Elev	1036

RNAV (GPS) RWY 4

TOMPKINSVILLE-MONROE COUNTY (TZV)

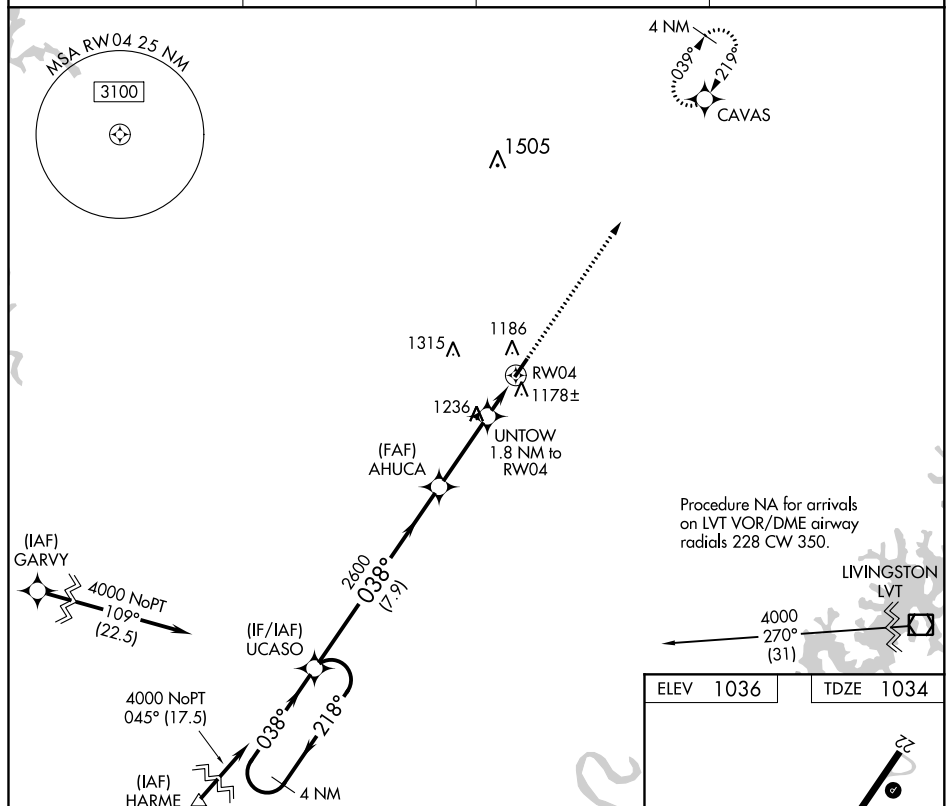
T DME/DME RNP-0.3 NA.
A NA Helicopter visibility reduction below 1 SM NA.
 Night landing: Rwy 4 NA.
 Use Glasgow altimeter setting.

MISSED APPROACH: Climb to 4000 direct CAVAS and hold.

AWOS-AV
123.050

GLW AWOS-3
118.525

MEMPHIS CENTER
132.9 290.3

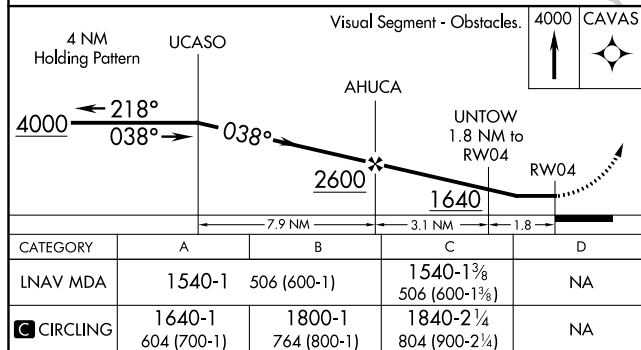
UNICOM
123.05 (CTAF) **L**


Procedure NA for arrivals
on LVT VOR/DME airway
radials 228 CW 350.

LIVINGSTON

4000
- 270°
(31)

ELEV	1036		TDZE	1034
------	------	--	------	------



CATEGORY	A	B	C	D
LNNAV MDA	1540-1	506 (600-1)	1540-1 $\frac{3}{8}$ 506 (600-1 $\frac{3}{8}$)	NA
 CIRCLING	1640-1 604 (700-1)	1800-1 764 (800-1)	1840-2 $\frac{1}{4}$ 804 (900-2 $\frac{1}{4}$)	NA

ELEV 1036

TDZE 1034

4000 X 75

0.3% UP

038° to RW04

MIRL Rwy 4-22

REIL Rws 4 and 22