

LOC/DME I-BYL	APP CRS	Rwy Idg	5499
108.3	200°	TDZE	1178
Chan 20		Apt Elev	1178

LOC RWY 20

WILLIAMSBURG-WHITLEY COUNTY (BYL)

DME required.

▼

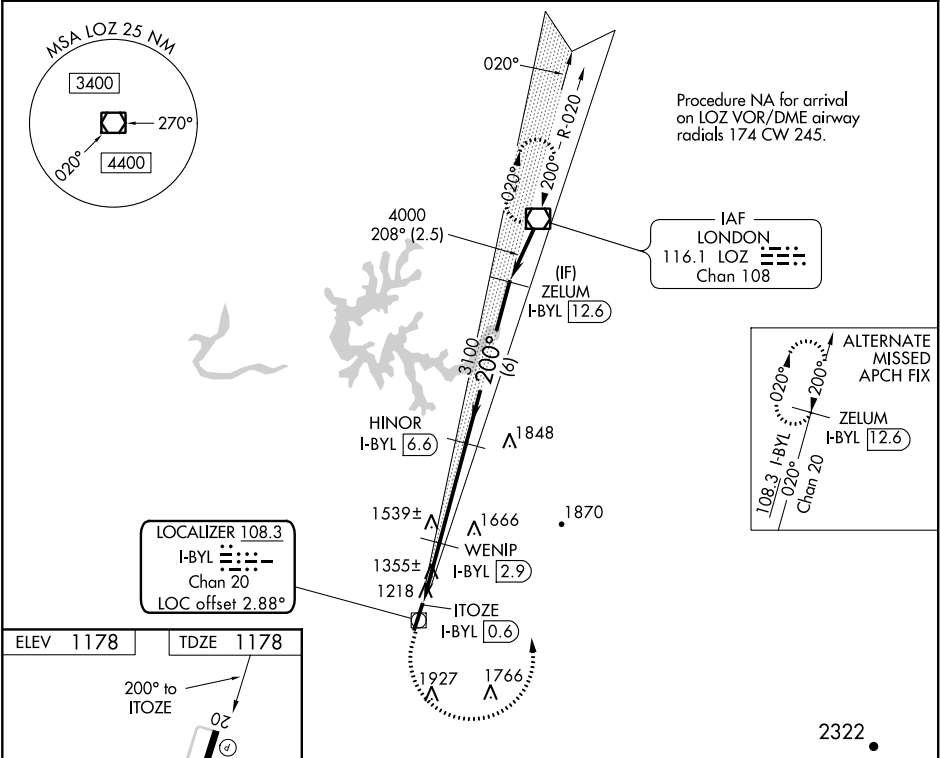
▲

⚠

Rwy 20 helicopter visibility reduction below ¾ SM NA. VDP NA when using London altimeter setting. When local altimeter setting not received, use London altimeter setting and increase all MDAs 60 feet and visibility S-20 Cats C/D and Circling Cat D ½ SM.

MISSED APPROACH: Climb to 1800 then climbing left turn to 4000 direct LOZ VOR/DME and hold.

AWOS-3 119.575	INDIANAPOLIS CENTER 124.625 371.925	UNICOM 122.7 (CTAF) 0
-------------------	--	--------------------------



MIRL Rwy 2-20

REIL Rws 2 and 20

1800 ↑	4000 ↙	LOZ 	VGSI and descent angles not coincident (VGSI Angle 3.17/TCH 30).	
CATEGORY	A	B	C	D
S-20	1740-1	562 (600-1)	1740-1½	562 (600-1½)
CIRCLING	1760-1	582 (600-1)	1760-1½ 582 (600-1½)	2080-3 902 (1000-3)

SE-1, 03 DEC 2020 to 31 DEC 2020

SE-1, 03 DEC 2020 to 31 DEC 2020