

| | | |
|--|------------------------|---|
| WAAS CH 70403 W20A | APP CRS 203° | Rwy Idg TDZE 1178 Apt Elev 1178 |
|--|------------------------|---|

RNAV (GPS) RWY 20

WILLIAMSBURG-WHITLEY COUNTY (BYL)

RNP APCH.

⚠

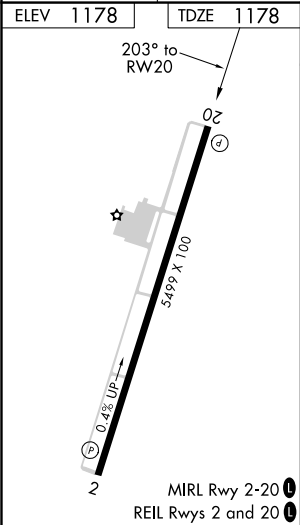
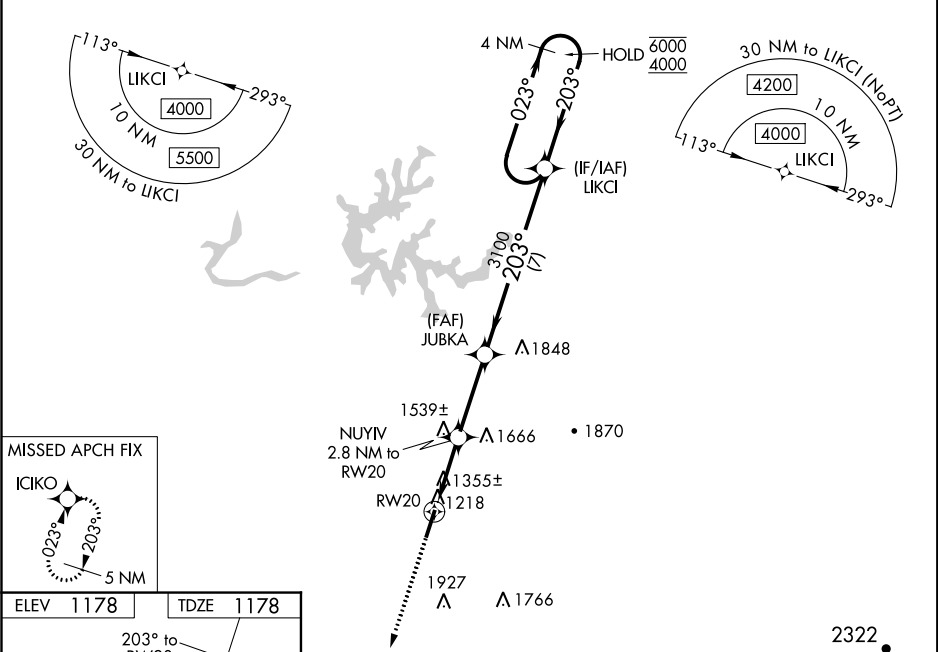
⚠

⚠

Rwy 20 helicopter visibility reduction below ¾ SM NA. Baro-VNAV NA when using London altimeter setting. For uncompensated Baro-VNAV systems, LNAV/VNAV NA below -17°C or above 54°C. VDP NA when using London altimeter setting. When local altimeter setting not received, use London altimeter setting and increase all DAs 48 feet and all MDAs 60 feet; increase LPV all Cats visibility ⅛ SM, LNAV/VNAV all Cats visibility ¼ SM, LNAV Cats C and D and Circling Cat C visibility ¼ SM.

MISSED APPROACH:
Climb to 4600 direct
ICKO and hold.

| | | |
|--------------------------|---|---------------------------------|
| AWOS-3 119.575 | INDIANAPOLIS CENTER 124.625 371.925 | UNICOM 122.7 (CTAF) 0 |
|--------------------------|---|---------------------------------|



4600

↑

ICIKO

✦

VGSI and RNAV glidepath not coincident.

(VGSI Angle 3.17/TCH 30).

4 NM

Holding Pattern

*LNAV only.

NUYIV

2.8 NM to RW20

JUBKA

3100

LIKCI

4000

023° →

← 203°

6000

4000

GP 3.00°

TCH 45

2100*

1.4

1.4

3.1 NM

7 NM

RW20

1.4

* 1.4 NM to RW20

| | | | | |
|--------------|----------------------|-------------|-------------------------|------------------------|
| CATEGORY | A | B | C | D |
| LPV DA | 1554-1¼ 376 (400-1¼) | | | |
| LNAV/VNAV DA | 1670-1⅝ 492 (500-1⅝) | | | |
| LNAV MDA | 1680-1 | 502 (600-1) | 1680-1⅝ | 502 (600-1⅝) |
| CIRCLING | 1760-1 | 582 (600-1) | 1760-1½ 582 (600-1½) | 2080-3 902 (1000-3) |