


VOR/DME LOZ 116.1 Chan 108	APP CRS 200°	Rwy Idg 5499 TDZE 1178 Apt Elev 1178
--	------------------------	---

VOR RWY 20
WILLIAMSBURG-WHITLEY COUNTY (BYL)

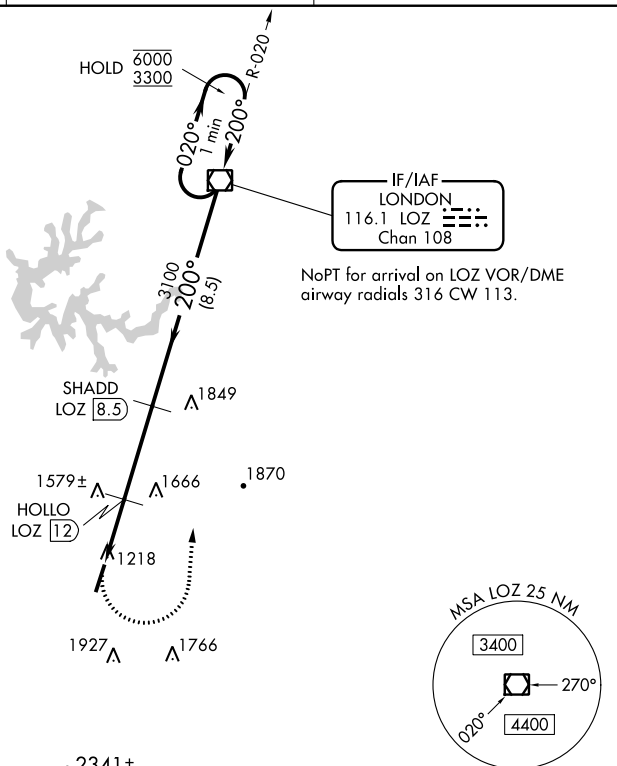

DME required.

 Rwy 20 helicopter visibility reduction below $\frac{3}{4}$ SM NA. VDP NA when using London altimeter setting. When local altimeter setting not received, use London altimeter setting and increase all MDA 60 feet and S-20 Cat C/D and Circling Cat C visibility $\frac{1}{8}$ SM.

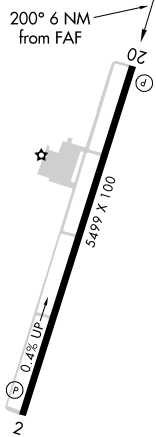
MISSED APPROACH:
Climbing left turn to
4000 direct LOZ
VOR/DME and hold.

AWOS-3
119.575

INDIANAPOLIS CENTER
124.625 371.925

UNICOM
122.7 (CTAF) 

ELEV	1178		TDZE	1178
------	------	--	------	------



MIRL Rwy 2-20 **L**
REIL Rwys 2 and 20 **L**

CATEGORY	A	B	C	D
S-20	1840-1 662 (700-1)		1840-1 $\frac{7}{8}$ 662 (700-1 $\frac{7}{8}$)	
CIRCLING	1840-1 662 (700-1)		1840-1 $\frac{7}{8}$ 662 (700-1 $\frac{7}{8}$)	2080-3 902 (1000-3)

WILLIAMSBURG, KENTUCKY
Orig-D 31JAN19

WILLIAMSBURG-WHITLEY COUNTY (BYL)
36°48'N-84°12'W VOR RMY 20

VOR RWY 20