

WAAS
CH **86909**
W02A

APP CRS
026°

Rwy Idg
TDZE **1028**
Apt Elev **1028**

RNAV (GPS) RWY 2

MOREHEAD-ROWAN COUNTY CLYDE A THOMAS RGNL (SYM)

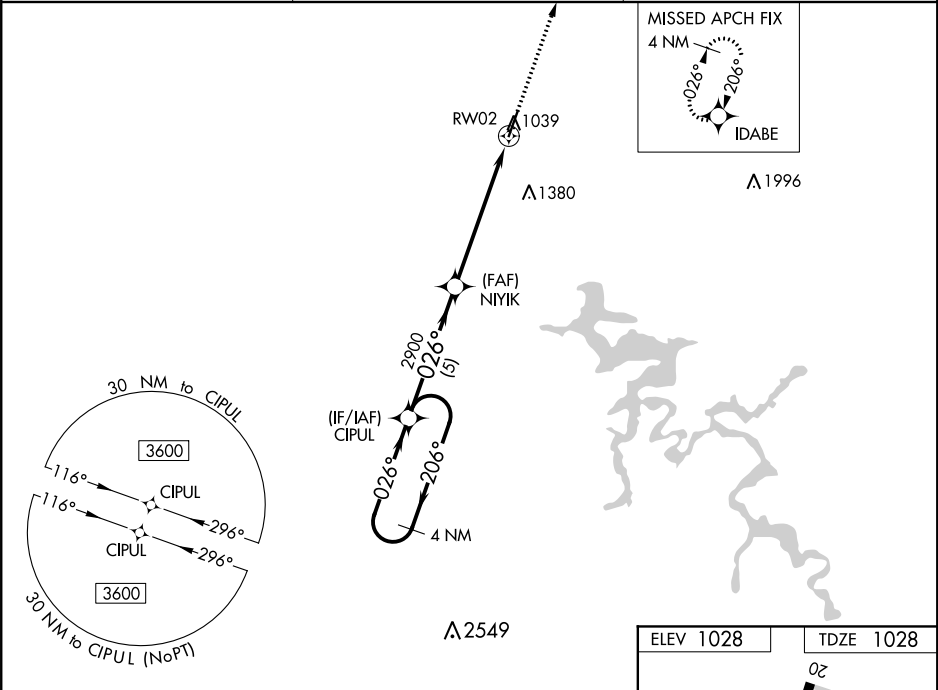
T

A

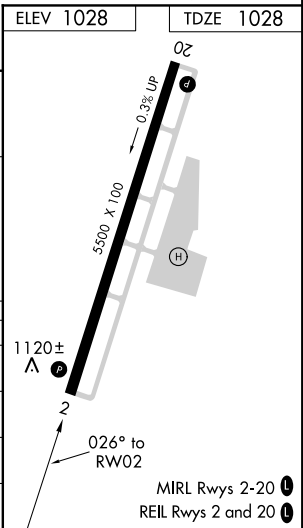
For uncompensated Baro-VNAV systems, LNAV/VNAV NA below -17°C (2°F) or above 54°C (130°F). DME/DME RNP-0.3 NA. Baro-VNAV and VDP NA when using Mount Sterling altimeter setting. When local altimeter setting not received, use Mount Sterling altimeter setting: increase all DA 50 feet and MDA 60 feet; increase LPV all Cats and LNAV Cats C/D visibility ½ mile, LNAV/VNAV all Cats visibility ¼ mile, and Circling Cats C/D visibility ¼ mile.

MISSED APPROACH:
Climb to 3600 direct IDABE and hold.

AWOS-3 119.95	INDIANAPOLIS CENTER 124.225 360.725	UNICOM 122.7 (CTAF) 0
-------------------------	---	---------------------------------



4 NM Holding Pattern		VGSI and RNAV glidepath not coincident (VGSI Angle 3.00/TCH 30).		3600	IDABE
CIPUL		NIYIK		2900	*RNAV only
3600 ← 206° / 026° →		2900		RW02	
GP 3.00° TCH 40		5 NM		4.4 NM	1.4 NM
CATEGORY	A	B	C	D	
LPV DA	1228-¾		200 (200-¾)		
LNAV/VNAV DA	1439-1⅜		411 (500-1⅜)		
LNAV MDA	1500-1	472 (500-1)	1500-1⅜	472 (500-1⅜)	
CIRCLING	1520-1	492 (500-1)	1760-2 732 (800-2)	1820-2½ 792 (800-2½)	



SE-1, 03 DEC 2020 to 31 DEC 2020

SE-1, 03 DEC 2020 to 31 DEC 2020