

| | | | |
|--|------------------------|-----------------------------|---|
| WAAS CH 78209 W20A | APP CRS 206° | Rwy Idg TDZE Apt Elev | 5500 1020 1028 |
|--|------------------------|-----------------------------|---|

RNAV (GPS) RWY 20

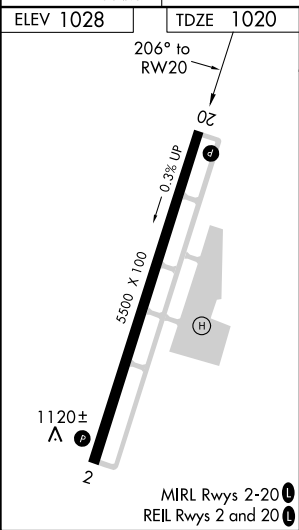
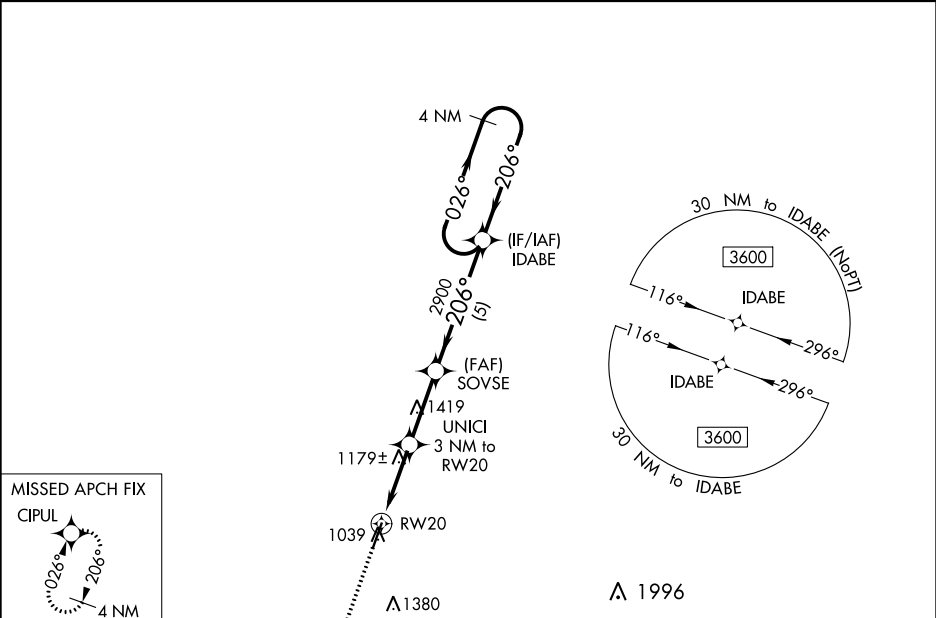
MOREHEAD-ROWAN COUNTY CLYDE A THOMAS RGNL (SYM)

⚠

For uncompensated Baro-VNAV systems, LNAV/VNAV NA below -17°C (2°C) or above 54°C (130°F). DME/DME RNP-0.3 NA. Baro-VNAV and VDP NA when using Mount Sterling altimeter setting. When local altimeter setting not received, use Mount Sterling altimeter setting: increase all DA 50 feet and all MDA 60 feet; increase LPV and LNAV/VNAV all Cats visibility 1⁄8 mile, LNAV Cats C/D visibility 1⁄8 mile, and Circling Cats C/D visibility 1⁄4 mile.

MISSED APPROACH:
Climb to 3600 direct CIPUL and hold.

| | | |
|-------------------------|---|---------------------------------|
| AWOS-3 119.95 | INDIANAPOLIS CENTER 124.225 360.725 | UNICOM 122.7 (CTAF) 0 |
|-------------------------|---|---------------------------------|



| | | | | | | |
|--------------|--------|--|--------------------|----------------------------|-------------|----------------------|
| 3600 | CIPUL | VGSI and RNAV glidepath not coincident (VGSI Angle 3.00/TCH 33). | | | | 4 NM Holding Pattern |
| *LNAV only | | UNICI 3 NM to RW20 | SOVSE 2900 | IDABE | 026° → 3600 | |
| | | *1.2 NM to RW20 | *2000 | 2900 | ← 206° | GP 3.00° TCH 40 |
| | | 1.2 NM | 1.8 NM | 2.8 NM | 5 NM | |
| CATEGORY | A | B | C | D | | |
| LPV DA | | 1270-7⁄8 | 250 (300-7⁄8) | | | |
| LNAV/VNAV DA | | 1453-1 1⁄2 | 433 (500-1 1⁄2) | | | |
| LNAV MDA | 1440-1 | 420 (500-1) | 1440-1 1⁄4 | 420 (500-1 1⁄4) | | |
| CIRCLING | 1520-1 | 492 (500-1) | 1760-2 732 (800-2) | 1820-2 1⁄2 792 (700-2 1⁄2) | | |