

CHARLESTON, SOUTH CAROLINA

HI-VOR/DME or TACAN RWY 15

VORTAC CHS <b>113.5</b> Chan <b>82</b>	APCH CRS <b>157°</b>	Rwy Idg TDZE Arprt Elev <b>9001</b> <b>43</b> <b>46</b>
--	-------------------------	--

JAL-76 [USAF]

CHARLESTON AFB/INTL (KCHS)

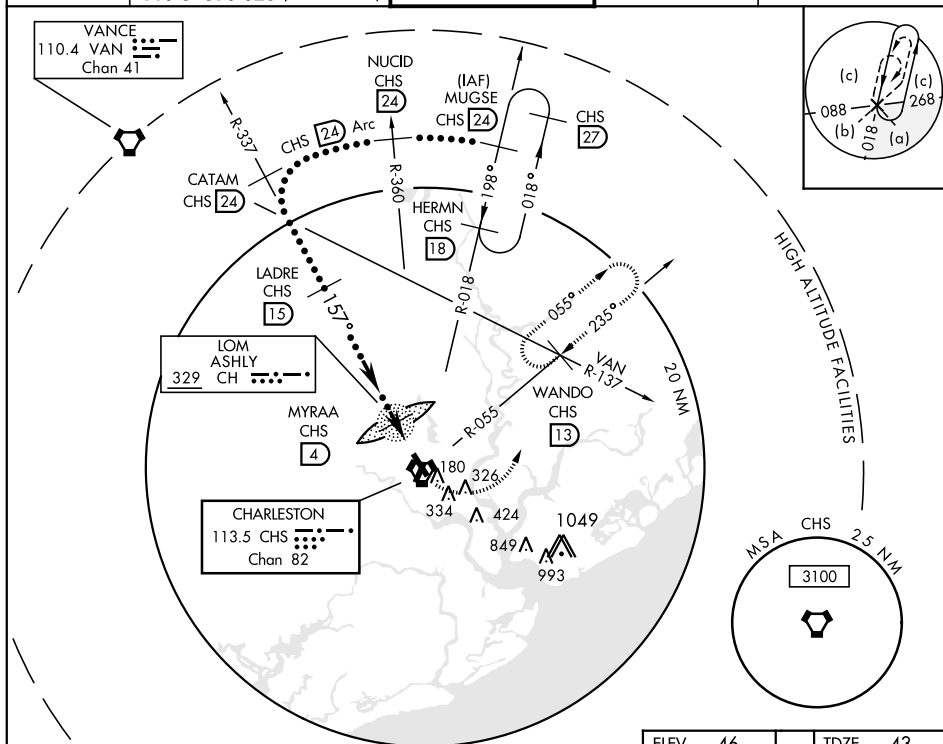
▼ \* When ALS inop, increase CAT D RVR to 6000, vis to 1¼, CAT E vis to 1½.

ALSF-2

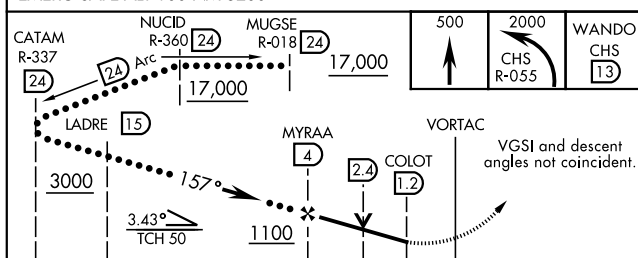


MISSED APPROACH: Climb to 500 then climbing left turn to 2000 via CHS R-055 to WANDO INT/CHS 13 DME and hold.

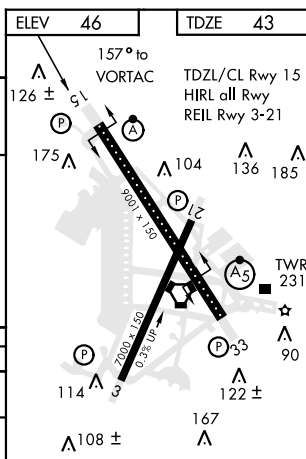
ATIS <b>124.75</b>	CHARLESTON APP CON <b>120.7 306.925</b> (151° - 330°) <b>119.3 379.925</b> (331° - 150°)	CHARLESTON TOWER <b>126.0 239.0</b>	GND CON <b>121.9 348.6</b>	CLNC DEL <b>127.325 291.65</b>
-----------------------	--	--	-------------------------------	-----------------------------------



EMERG SAFE ALT 100 NM 3200



CATEGORY	C	D	E
S-15*	460/40 417 (500-¾)	460/50 417	(500-1)
CIRCLING	540-1½ 495 (500-1½)	600-2 555 (600-2)	740-2½ 695 (700-2½)



CHARLESTON, SOUTH CAROLINA

32°54'N-80°02'W

CHARLESTON AFB/INTL (KCHS)

Amtd 4 18032

HI-VOR/DME or TACAN RWY 15

SE-2, 03 DEC 2020 to 31 DEC 2020