

ILS RWY 18R (SA CAT I)
CHARLOTTE/DOUGLAS INTL (CLT)

MISSED APPROACH: Climb to 1200 then climbing right turn to 4000 on CLT VOR/DME R-250 to STULL INT/CLT 13 DME and hold, continue climb-in-hold to 4000.

T Simultaneous approach authorized.
A Requires specific OPSPEC, MSPEC or LOA approval and use of HUD to DH.

D-ATIS	CHARLOTTE APP CON	CHARLOTTE TOWER	GND CON	CLNC DEL
ARR 121.15	(001°-119°) 128.32	(Rwys 18L-36R, 5-23) 118.1 257.8	121.8 348.6 (WEST)	127.15
DEP 132.1	(120°-295°) 120.05	(Rwy 18C-36C) 126.4 257.8	121.9 348.6 (EAST)	348.6
	(296°-360°) 134.75	(Rwy 18R-36L) 133.35 257.8		
	(180°-359°) 257.2			
	(360°-179°) 307.8			CPDLC

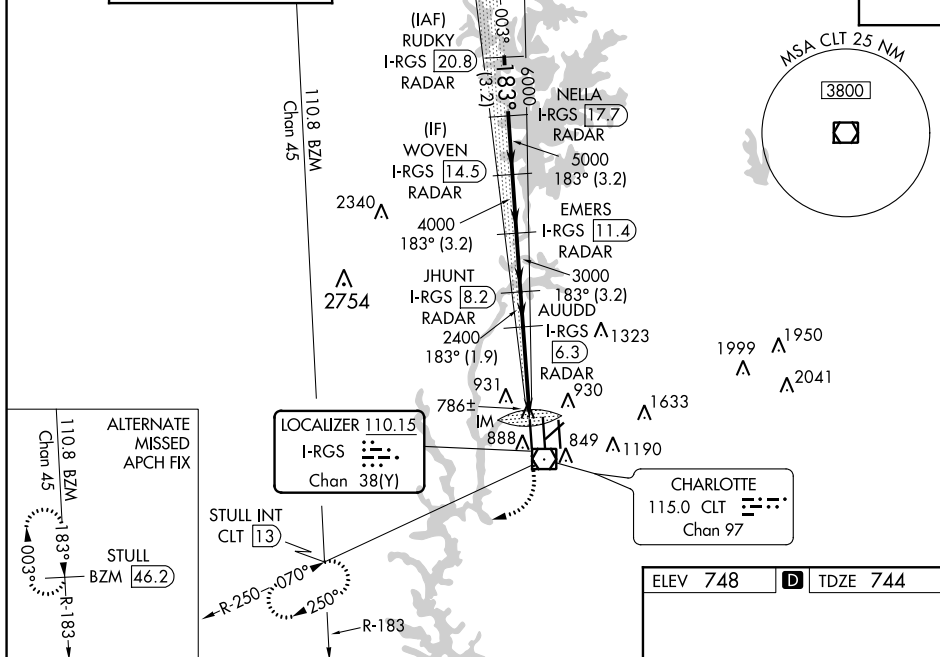


Diagram illustrating the RA 228/14 S-ILS 18R glidepath. The glidepath is defined by a 3.00° angle and a TCH of 55 feet. The glidepath is divided into segments with specific distances: 3.2 NM, 3.2 NM, 3.2 NM, 3.2 NM, 1.9 NM, 5 NM, and 1078 feet. The diagram also shows the ILS and VGS glidepaths, which do not coincide. The VGS glidepath is shown as a dashed line. The ILS glidepath is shown as a solid line. The diagram includes a table of categories and a table of distances.

CATEGORY	A	B	C	D
S-ILS 18R				

Category	Distance
A	3.2 NM
B	3.2 NM
C	1.9 NM
D	5 NM

SA CATEGORY I ILS SPECIAL AIRCREW
& AIRCRAFT CERTIFICATION REQUIRED

