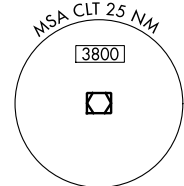
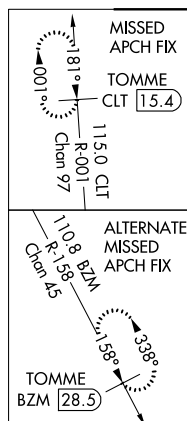
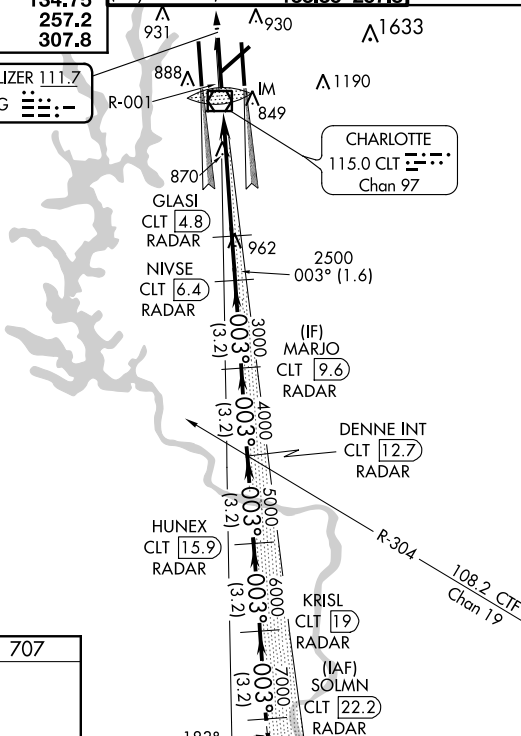


ILS RWY 36C (CAT II & III)
CHARLOTTE/DOUGLAS INTL (CLT)

MISSED APPROACH: Climb to 3000 on CLT
VOR/DME R-001 to TOMME/CLT 15.4 DME
and hold.

LOCALIZER 111.7
I-DQG $\ddot{=}\ddot{=}\ddot{=}$



3000
↑
CLT R-001

183
TOMME
CLT 15.4

VGSI and ILS glidepath not coincident
(VGSI Angle 3.00/TCH 72).

SOLMN
CLT 22.2
RADAR

GLASI
CLT 4.8
RADAR

NIVSE
CLT 6.4
RADAR

MARJO
CLT 9.6
RADAR

DENNE INT
CLT 12.7
RADAR

HUNEX
CLT 15.9
RADAR

KRISL
CLT 19
RADAR

003° 8000

IM 809

2500

3000

4000

5000

6000

7000

GS 3.00
TCH 57

5.4 NM 1.6 NM 3.2 NM 3.2 NM 3.2 NM 3.2 NM 3.2 NM

CATEGORY	A	B	C	D
S-ILS 36C		CAT II	RA 126/12 100 DA 807	
S-ILS 36C		CAT IIIa	RVR 07	
S-ILS 36C		CAT IIIb	RVR 07	
S-ILS 36C		CAT IIIc	NA	

CATEGORY II & III ILS - SPECIAL AIRCREW
& AIRCRAFT CERTIFICATION REQUIRED

CHARLOTTE/DOUGLAS INTL (CLT)

35°13'N-80°57'W

ILS RWY 36C (CAT II & III)