
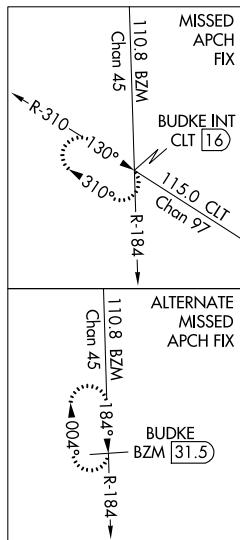
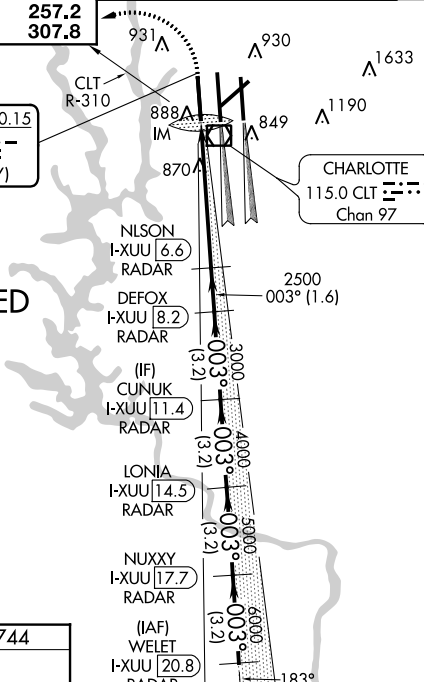


**ILS RWY 36L (CAT II & III)**  
**CHARLOTTE/DOUGLAS INTL (CLT)**

**MISSED APPROACH:** Climb to 1200 then climbing left turn to 4000 on CLT VOR/DME R-310 to BUDKE INT/CLT 16 DME and hold.

LOCALIZER 110.15  
I-XUU   
Chan 38(Y)



1200 4000

CLT R-310 BUDKE INT

VGS1 and ILS glidepath not coincident (VGS1 Angle 3.00/TCH 70).

WELT I-XUU [20.8] RADAR

LONIA I-XUU [14.5] RADAR

NUXXY I-XUU [17.7] RADAR

CUNUK I-XUU [11.4] RADAR

DEFOX I-XUU [8.2] RADAR

NELSON I-XUU [6.6] RADAR

IM 841

2500

3000

4000

5000

6000

7000

GS 3.00° TCH 55

1120°

5.3 NM

1.6 NM

3.2 NM

3.2 NM

3.2 NM

3.2 NM

CATEGORY

A B C D

S-ILS 36L CAT II RA 106/12 100 DA 844

S-ILS 36L CAT IIa RVR 07

S-ILS 36L CAT IIb RVR 06

S-ILS 36L CAT IIc NA

## CATEGORY II & III ILS SPECIAL AIRCREW & AIRCRAFT CERTIFICATION REQUIRED

SE-2, 03 DEC 2020 to 31 DEC 2020