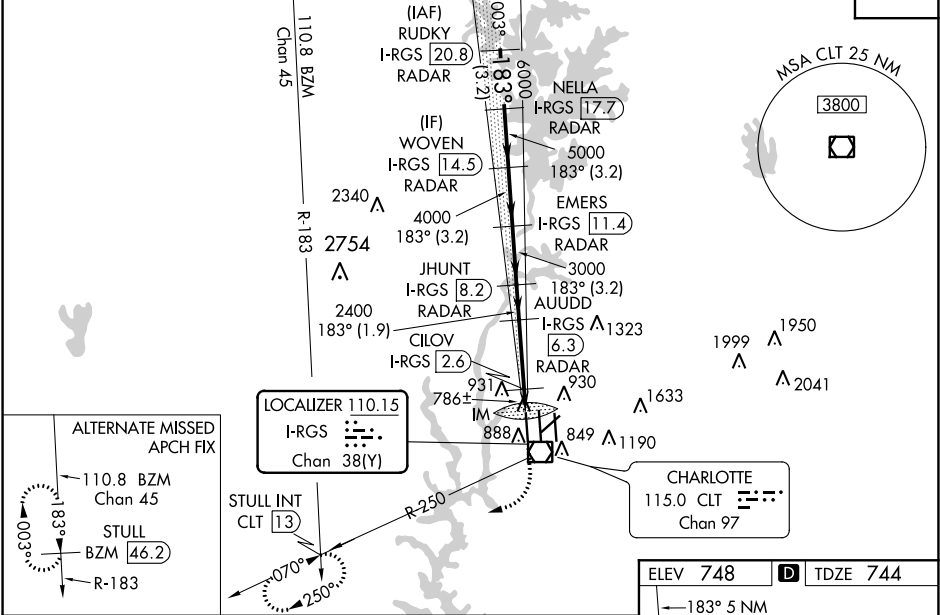



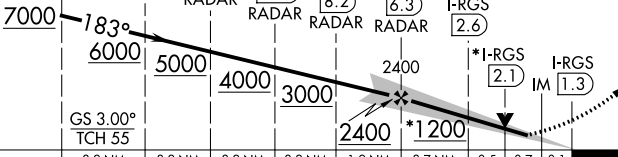
LOC/DME I-RGS <b>110.15</b> Chan <b>38(Y)</b>	APP CRS <b>183°</b>	Rwy Idg <b>9000</b> TDZE <b>744</b> Apt Elev <b>748</b>
---	------------------------	---

ILS or LOC RWY 18R  
CHARLOTTE/DOUGLAS INTL (CLT)

RADAR required for procedure entry. DME or RADAR required.		ALSIF-2 	MISSED APPROACH: Climb to 1200 then climbing right turn to 4000 on CLT VOR/DME R-250 to STULL INT/CLT 13 DME and hold, continue climb-in-hold to 4000.
Simultaneous approach authorized. CILOV minimums: For inop ALS, increase S-LOC 18R all Cats visibility to RVR 4500.			

D-ATIS	CHARLOTTE APP CON	CHARLOTTE TOWER	GND CON	CLNC DEL
ARR <b>121.15</b> DEP <b>132.1</b>	(001°-119°) <b>128.32</b> (120°-295°) <b>120.05</b> (296°-360°) <b>134.75</b> (180°-359°) <b>257.2</b> (360°-179°) <b>307.8</b>	(Rwys 18L-36R, 5-23) <b>118.1</b> <b>257.8</b> (Rwy 18C-36C) <b>126.4</b> <b>257.8</b> (Rwy 18R-36L) <b>133.35</b> <b>257.8</b>	<b>121.8 348.6</b> (WEST) <b>121.9 348.6</b> (EAST)	<b>127.15</b> <b>348.6</b>



VGSi and ILS glidepath not coincident (VGSi Angle 2.80/TCH 65).					<div>1200</div> <div>↑</div>		<div>4000</div> <div></div> <div>CLT R-250</div>		STULL INT	
RUDKY I-RGS <span>20.8</span> RADAR	NELLA I-RGS <span>17.7</span> RADAR	WOVEN I-RGS <span>14.5</span> RADAR	EMERS I-RGS <span>11.4</span> RADAR	JHUNT I-RGS <span>8.2</span> RADAR	AUDD I-RGS <span>6.3</span> RADAR	CILOV I-RGS <span>2.6</span>	*LOC only			
<div>7000</div> <div></div> <div>183°</div> <div>6000</div> <div>5000</div> <div>4000</div> <div>3000</div> <div>2400</div> <div>2400</div> <div>*1200</div> <div>GS 3.00° TCH 55</div> <div>←3.2 NM</div> <div>3.2 NM</div> <div>3.2 NM</div> <div>3.2 NM</div> <div>1.9 NM</div> <div>3.7 NM</div> <div>0.5</div> <div>0.7</div> <div>0.1</div> <div>IM</div>										
CATEGORY	A		B		C		D			
S-ILS 18R	944/18 200 (200-½)									
S-LOC 18R	1200/24 456 (500-½)				1200/45 456 (500-¾)					
CILOV FIX MINIMUMS (DME REQUIRED)										
S-LOC 18R	1040/24 296 (300-½)									

