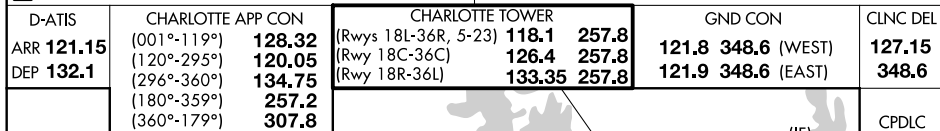
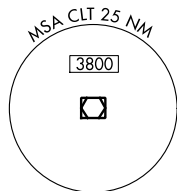
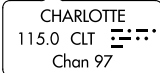
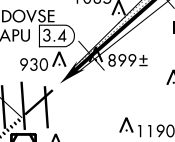
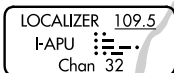
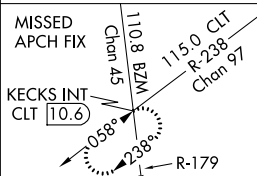
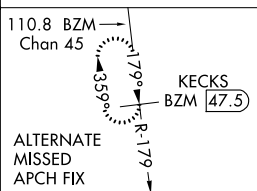


ILS or LOC RWY 23  
CHARLOTTE/DOUGLAS INTL (CLT)

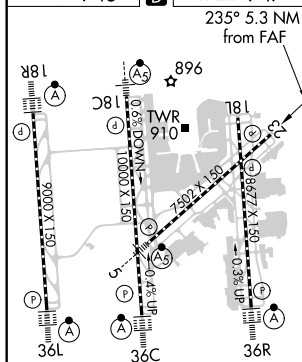
**MISSED APPROACH:** Climb to 4000 via heading 235° and CLT R-238 to KECKS INT/CLT 10.6 DME and hold, continue climb-in-hold to 4000.



2340  $\Delta$

2754  $\Delta$ 

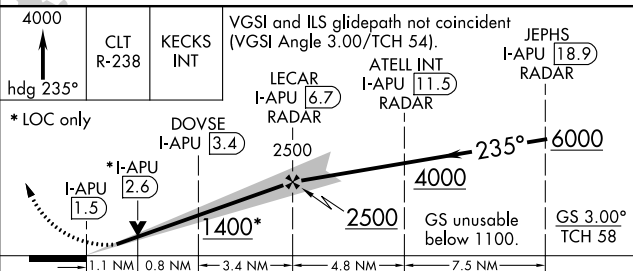
ELEV 748		TDZE 747
----------	---	----------



HIRL all Rwy's  
REIL Rwy's 18L and 23  
TDZ/CL Rwy's 18R, 36L, 36C and 36R

FAF to MAP 5.3 NM

Knots	60	90	120	150	180
Min:Sec	5:18	3:32	2:39	2:07	1:46



CATEGORY	A	B	C	D
S-ILS 23	1100-1¼ 353 (400-1¼)			
S-LOC 23	1400/50 653 (700-1)	1400-1¾ 653 (700-1¾)	1400-2 653 (700-2)	
DOVSE FIX MINIMUMS				
S-LOC 23	1160/50 413 (500-1)	1160/60 413 (500-1¼)		