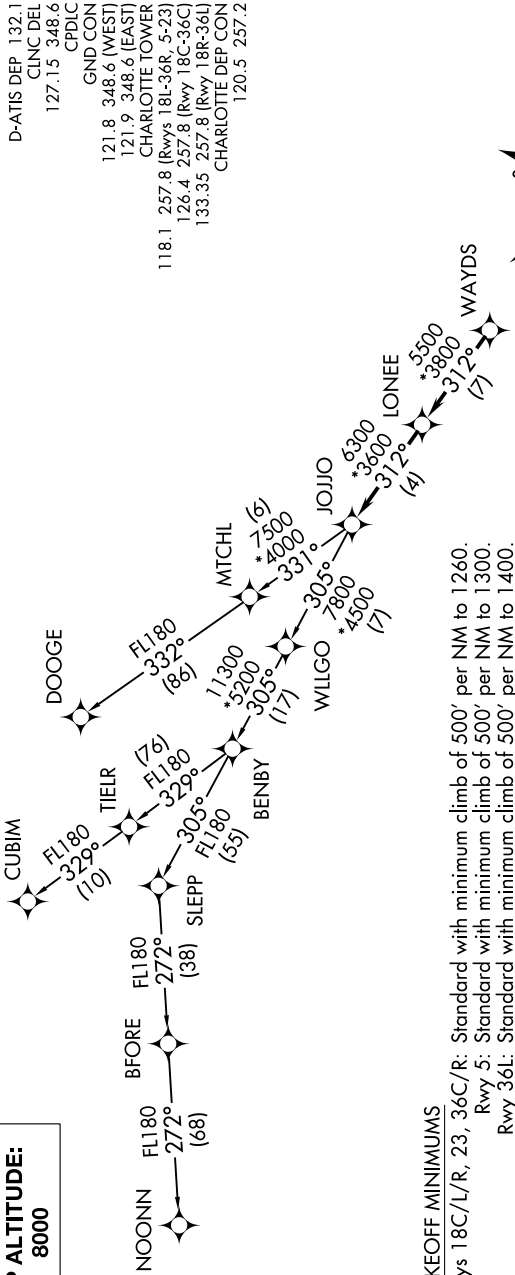


JOJJO FOUR DEPARTURE (RNAV)

SE-2, 03 DEC 2020 to 31 DEC 2020

TOP ALTITUDE:
8000



TAKEOFF MINIMUMS

Rwys 18C/L/R, 23, 36C/R: Standard with minimum climb of 500' per NM to 1260.
Rwy 5: Standard with minimum climb of 500' per NM to 1300.
Rwy 36L: Standard with minimum climb of 500' per NM to 1400.

N

- NOTE: For turbojets only.
- NOTE: DME/DME/IRU or GPS required.
- NOTE: RNAV 1.
- NOTE: RADAR required.
- NOTE: If unable to accept climb rates, advise ATC on initial contact.
- NOTE: Accelerate to 250K, if unable advise ATC.
- NOTE: Upon reaching 10000 MSL, accelerate to and maintain 280K, if unable advise ATC.
- NOTE: NOONN TRANSITION ATC assigned only.

NOTE: Chart not to scale.

(NARRATIVE ON FOLLOWING PAGE)

SE-2, 03 DEC 2020 to 31 DEC 2020

JOJJO FOUR DEPARTURE (RNAV)