

KNIGHTS TWO DEPARTURE

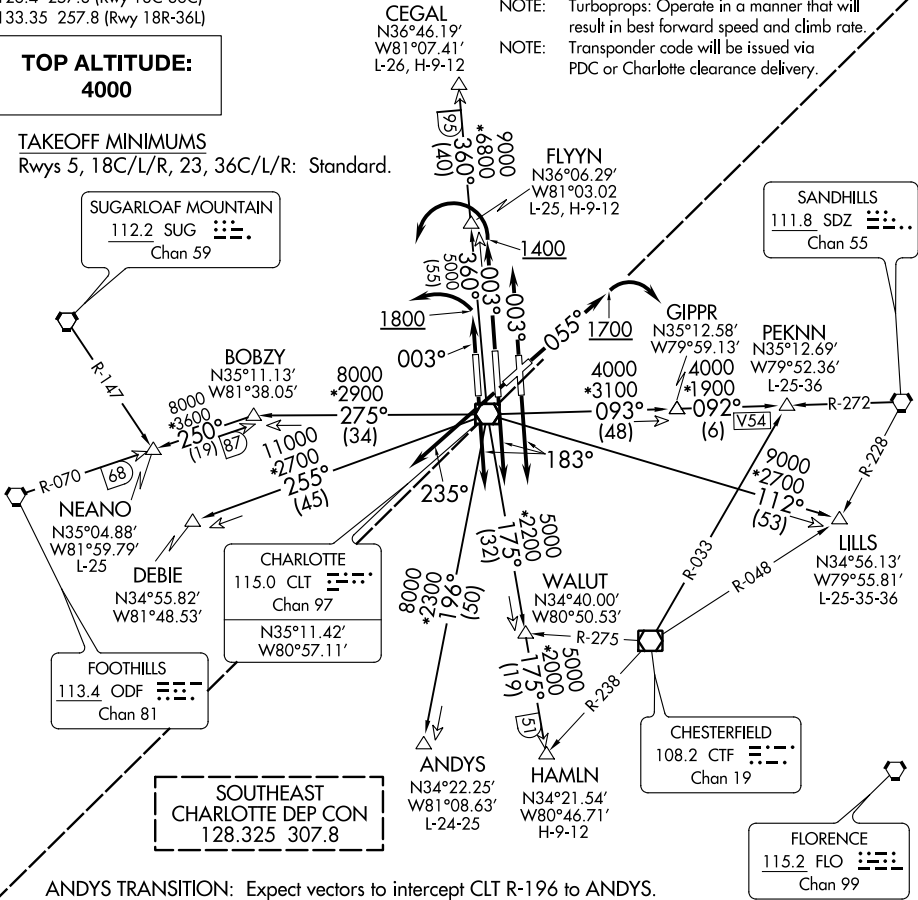
D-ATIS DEP 132.1  
CLNIC DEL  
127.15 348.6  
CPDLC  
GND CON  
121.8 348.6 (WEST)  
121.9 348.6 (EAST)  
CHARLOTTE TOWER  
118.1 257.8 (Rwys 18L-36R, 5-23)  
126.4 257.8 (Rwy 18C-36C)  
133.35 257.8 (Rwy 18R-36L)

TOP ALTITUDE:  
4000

TAKEOFF MINIMUMS  
Rwys 5, 18C/L/R, 23, 36C/L/R: Standard.

SUGARLOAF MOUNTAIN  
112.2 SUG  
Chan 59

SANDHILLS  
111.8 SDZ  
Chan 55



ANDYS TRANSITION: Expect vectors to intercept CLT R-196 to ANDYS.  
CEGAL TRANSITION: Expect vectors to intercept CLT R-360 to CEGAL.  
DEBIE TRANSITION: Expect vectors to intercept CLT R-255 to DEBIE.  
FLYNN TRANSITION: Expect vectors to intercept CLT R-360 to FLYNN.  
HAMLN TRANSITION: Expect vectors to intercept CLT R-175 to HAMLN.  
LILLS TRANSITION: Expect vectors to intercept CLT R-112 to LILLS.  
NEANO TRANSITION: Expect vectors to intercept CLT R-275 to BOBZY then ODF R-070 to NEANO.  
PEKNN TRANSITION: Expect vectors to intercept CLT R-093 to GIPPR then SDZ R-272 to PEKNN.

NOTE: Chart not to scale.

(NARRATIVE ON FOLLOWING PAGE)

KNIGHTS TWO DEPARTURE