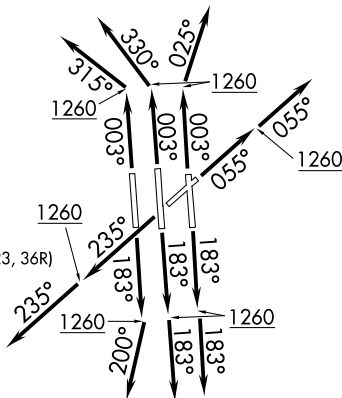


CHARLOTTE/DOUGLAS INTL (CLT)  
CHARLOTTE, NORTH CAROLINA

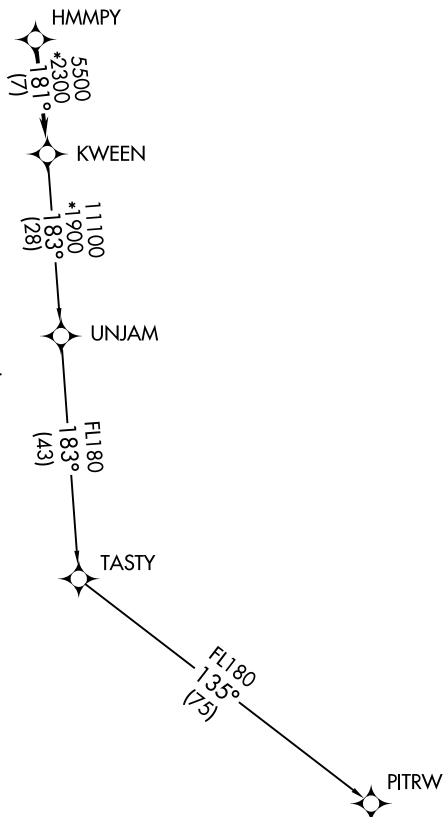
## KWEEN FOUR DEPARTURE (RNAV)

124.0 307.8 (Rwys 5, 18C, 18L, 18R, 23, 36R)



**TOP ALTITUDE:**  
8000

NOTE: For turbojets only.  
NOTE: DME/DME/IRU or GPS required.  
NOTE: RNAV 1.  
NOTE: RADAR required.  
NOTE: If unable to accept climb rates,  
advise ATC on initial contact.  
NOTE: Accelerate to 250K, if unable advise ATC.  
Upon reaching 10000 MSL, accelerate to  
and maintain 280K, if unable advise ATC.  
NOTE: Transponder code will be issued via PDC  
or Charlotte CLNC DEL.



## TAKEOFF MINIMUMS

Rwys 18C/L/R, 23, 36C/L/R: Standard with minimum climb of 500' per NM to 1260.

Rwy 5: Standard with minimum climb of 500' per NM to 1300.

NOTE: Chart not to scale.

(NARRATIVE ON FOLLOWING PAGE)

## KWEEN FOUR DEPARTURE (RNAV)

(KWEEN4.KWEEN) 03JAN19

CHARLOTTE, NORTH CAROLINA  
CHARLOTTE/DOUGLAS INTL (CLT)

SE-2, 03 DEC 2020 to 31 DEC 2020