

LILLS TWO DEPARTURE (RNAV)

TOP ALTITUDE:
8000

D-ATIS DEP 132.1

CLNC DEL

127.15 348.6

CPDLC

GND CON

121.8 348.6 (WEST)

121.9 348.6 (EAST)

CHARLOTTE TOWER

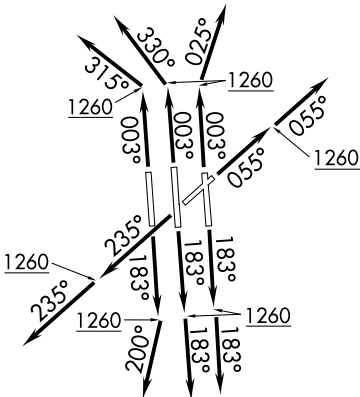
118.1 257.8 (Rwys 18L-36R, 5-23)

126.4 257.8 (Rwys 18C-36C)

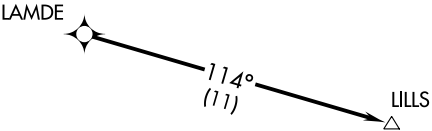
133.35 257.8 (Rwys 18R-36L)

CHARLOTTE DEP CON

124.0 307.8



- NOTE: For turbojets only.
NOTE: DME/DME/IRU or GPS required.
NOTE: RNAV 1.
NOTE: RADAR required.
NOTE: Accelerate to 250K, if unable advise ATC. Upon reaching 10000 MSL, accelerate to and maintain 280K, if unable advise ATC.
NOTE: If unable to accept climb rates, advise ATC on initial contact.
NOTE: Transponder code will be issued via PDC or Charlotte CLNC DEL.



TAKEOFF MINIMUMS

Rwys 18C/L/R, 23, 36C/R: Standard with minimum climb of 500' per NM to 1260.

Rwy 5: Standard with minimum climb of 500' per NM to 1300.

Rwy 36L: Standard with minimum climb of 500' per NM to 1400.

NOTE: Chart not to scale.



DEPARTURE ROUTE DESCRIPTION
SEE ADDITIONAL REQUIREMENTS ON AAUP.

TAKEOFF RWY 5: Climb heading 055° to 1260, then on heading 055° or as assigned by ATC, expect RADAR vectors to LAMDE, thence. . .
TAKEOFF RWYS 18C/L: Climb heading 183° to 1260, then on heading 183° or as assigned by ATC, expect RADAR vectors to LAMDE, thence. . .
TAKEOFF RWY 18R: Climb heading 183° to 1260, then on heading 200° or as assigned by ATC, expect RADAR vectors to LAMDE, thence. . .
TAKEOFF RWY 23: Climb heading 235° to 1260, then on heading 235° or as assigned by ATC, expect RADAR vectors to LAMDE, thence. . .
TAKEOFF RWY 36C: Climb heading 003° to 1260, then on heading 330° or as assigned by ATC, expect RADAR vectors to LAMDE, thence. . .
TAKEOFF RWY 36L: Climb heading 003° to 1260, then on heading 315° or as assigned by ATC, expect RADAR vectors to LAMDE, thence. . .
TAKEOFF RWY 36R: Climb heading 003° to 1260, then on heading 025° or as assigned by ATC, expect RADAR vectors to LAMDE, thence. . .
..on depicted route to LILLS. Maintain 8000. Expect clearance to filed altitude within 10 minutes after departure.

LILLS TWO DEPARTURE (RNAV)