

APP CRS 055°	Rwy Idg	7092
	TDZE	716
	Apt Elev	748

RNAV (RNP) Z RWY 5
CHARLOTTE/DOUGLAS INTL (CLT)

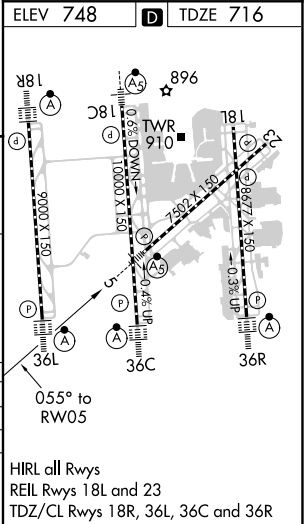
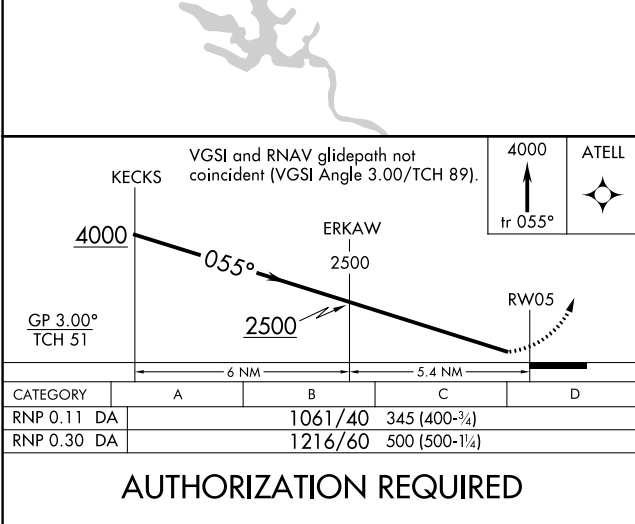
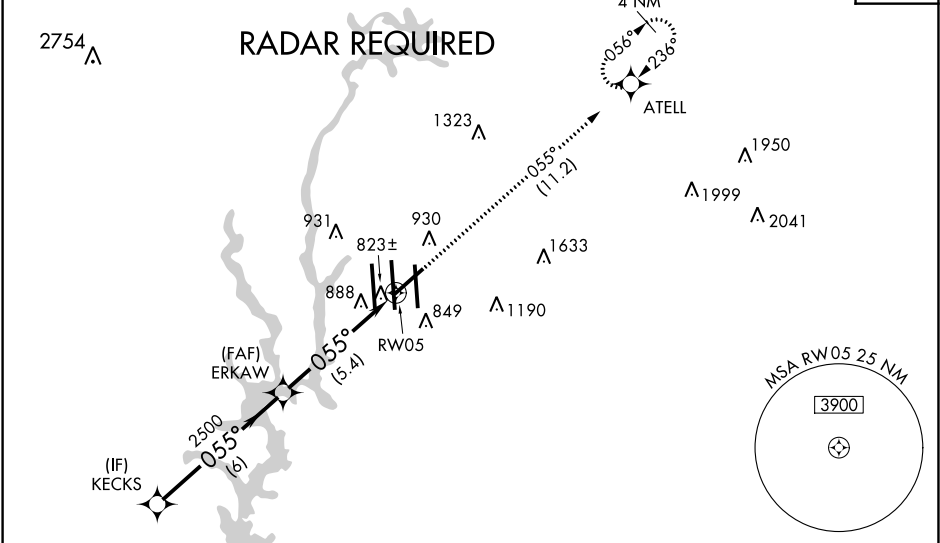
GPS required. For uncompensated Baro-VNAV systems, procedure NA below -10°C (14°F) or above 47°C (117°F). Rwy 5 helicopter visibility reduction below ¾ SM NA. For inop MALSR, increase RNP 0.11 all Cats visibility to RVR 6000 and RNP 0.30 all Cats visibility to 1¾ mile.



MISSED APPROACH: Climb to 4000 via track 055° to ATELL and hold, continue climb-in-hold to 4000.

D-ATIS	CHARLOTTE APP CON	CHARLOTTE TOWER	GND CON	CLNC DEL
ARR 121.15	(001°-119°) 128.32	(Rwys 18L-36R, 5-23) 118.1 257.8	121.8 348.6 (WEST)	127.15
DEP 132.1	(120°-295°) 120.05	(Rwy 18C-36C) 126.4 257.8	121.9 348.6 (EAST)	348.6
	(296°-360°) 134.75	(Rwy 18R-36L) 133.35 257.8		
	(180°-359°) 257.2			
	(360°-179°) 307.8			

CPDLC



SE-2, 03 DEC 2020 to 31 DEC 2020

SE-2, 03 DEC 2020 to 31 DEC 2020