

WAAS CH <b>81800</b> <b>W18B</b>	APP CRS <b>183°</b>	Rwy Idg <b>10000</b> TDZE <b>742</b> Apt Elev <b>748</b>
--	------------------------	--

RNAV (GPS) Y RWY 18C

CHARLOTTE/DOUGLAS INTL (CLT)

RNP APCH.

T

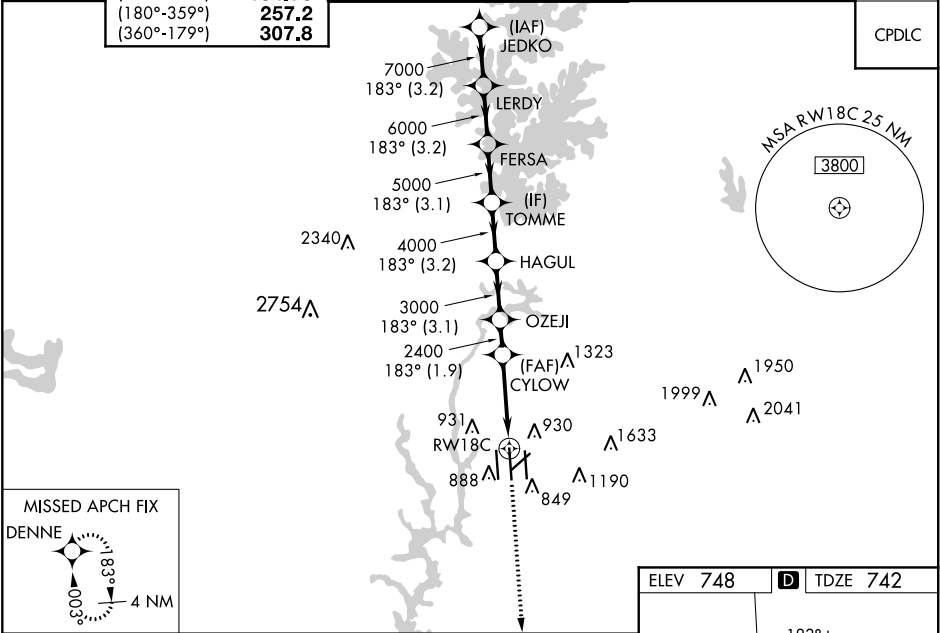
A

Circling NA at night. Simultaneous approach authorized. LNAV procedure NA during simultaneous operations. Use of FD or AP required during simultaneous operations. For uncompensated Baro-VNAV systems, LNAV/VNAV NA below -11°C or above 54°C.  
\*\* RVR 1800 authorized with use of FD or AP or HUD to DA.

MALSR

MISSED APPROACH:  
Climb to 3000 direct DENNE and hold.

D-ATIS ARR <b>121.15</b> DEP <b>132.1</b>	CHARLOTTE APP CON (001°-119°) <b>128.32</b> (120°-295°) <b>120.05</b> (296°-360°) <b>134.75</b> (180°-359°) <b>257.2</b> (360°-179°) <b>307.8</b>	CHARLOTTE TOWER (Rwys 18L-36R, 5-23) <b>118.1 257.8</b> (Rwy 18C-36C) <b>126.4 257.8</b> (Rwy 18R-36L) <b>133.35 257.8</b>	GND CON <b>121.8 348.6</b> (WEST) <b>121.9 348.6</b> (EAST)	CLNC DEL <b>127.15 348.6</b>
---	--	---	---	---------------------------------



JEDKO LERDY FERSA TOMME HAGUL OZEJI CYLOW				
8000 7000 6000 5000 4000 3000 2400				
GP 3.00° TCH 55				
-3.2 NM 3.2 NM 3.1 NM 3.2 NM 3.1 NM 1.9 NM 3.8 NM 1.2 NM				
CATEGORY	A		B	
LPV DA **	942/24		200 (200-½)	
LNAV/VNAV DA	1070/26		328 (400-½)	
LNAV MDA	1200/24 458 (500-½)		1220/45 458 (500-¾)	
CIRCLING	1380-1 632 (700-1)		1500-2¼ 752 (800-2¼)	

