

WAAS CH <b>82415</b> <b>W18D</b>	APP CRS <b>183°</b>	Rwy Idg TDZE <b>744</b> Apt Elev <b>748</b>
--	------------------------	---

RNAV (GPS) Y RWY 18R  
CHARLOTTE/DOUGLAS INTL (CLT)

RNP APCH

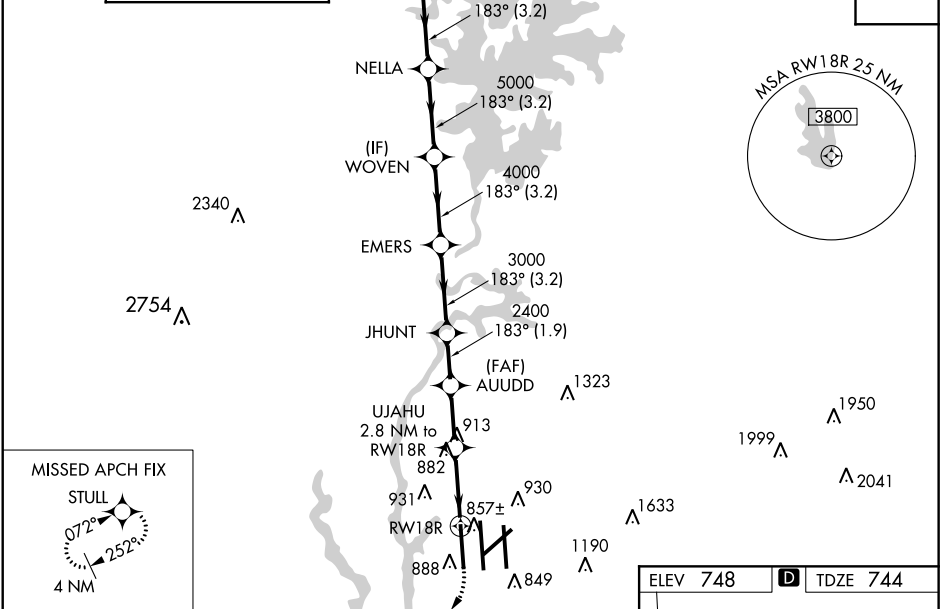
⚠

Circling NA at night. Simultaneous approach authorized. LNAV procedure NA during simultaneous operations. Use of FD or AP providing RNAV track guidance required during simultaneous operations. For uncompensated Baro-VNAV systems, LNAV/VNAV NA below -11°C or above 54°C. For inop ALS, increase LNAV/VNAV all Cats visibility to RVR 4500. For inop ALS, increase LNAV Cat C/D visibility to RVR 5500.

ALSF-2

MISSED APPROACH: Climb to 1200 then climbing right turn to 4000 direct STULL and hold, continue climb-in-hold to 4000.

D-ATIS ARR <b>121.15</b> DEP <b>132.1</b>	CHARLOTTE APP CON (001°-119°) <b>128.32</b> (120°-295°) <b>120.05</b> (296°-360°) <b>134.75</b> (180°-359°) <b>257.2</b> (360°-179°) <b>307.8</b>	CHARLOTTE TOWER (Rwys 18L-36R, 5-23) <b>118.1 257.8</b> (Rwy 18C-36C) <b>126.4 257.8</b> (Rwy 18R-36L) <b>133.35 257.8</b>	GND CON <b>121.8 348.6</b> (WEST) <b>121.9 348.6</b> (EAST)	CLNC DEL <b>127.15</b> <b>348.6</b>
---	--	---	---	---



RUDKY NELLA		VGSI and RNAV glidepath not coincident (VGSI Angle 2.80/TCH 65).		1200 4000	STULL
7000 183°		6000 5000 4000 3000		*LNAV only.	
GP 3.00°		TCH 55		*1 NM to RWY 18R	
3.2 NM		3.2 NM		1.9 NM	
2.2 NM		1.8 NM		1 NM	
CATEGORY	A	B	C	D	
LPV DA	944/18 200 (200-½)				
LNAV/VNAV DA	1018/24 274 (300-½)				
LNAV MDA	1120/24 376 (400-½)		1120/40 376 (400-¾)		
CIRCLING	1380-1 632 (700-1)		1500-2¼ 752 (800-2¼)		1500-2½ 752 (800-2½)