

WAAS CH 90100 W36D	APP CRS 003°	Rwy Idg TDZE 727 Apt Elev 748
--	------------------------	---

RNAV (GPS) Y RWY 36R

CHARLOTTE/DOUGLAS INTL (CLT)

RNP APCH.

⚠

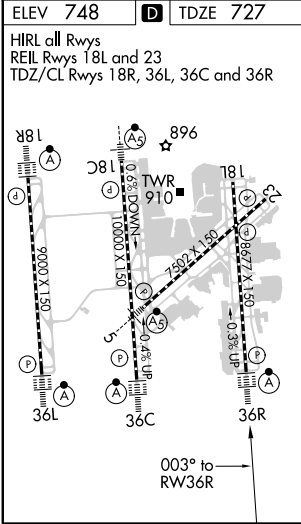
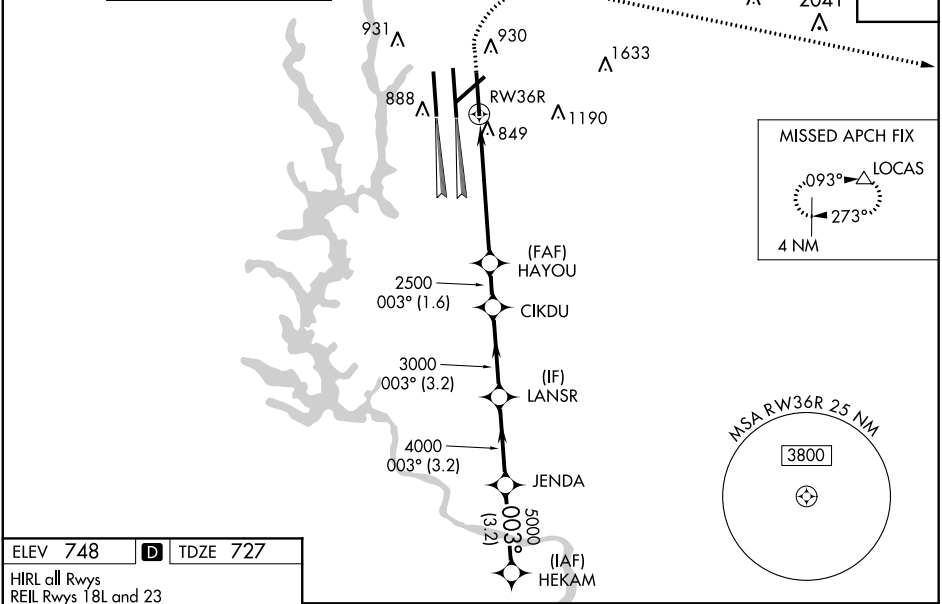
Circling NA at night. For uncompensated Baro-VNAV systems, LNAV/VNAV NA below -11°C or above 54°C. Simultaneous approach authorized. Use of FD or AP required during simultaneous operations. LNAV procedure NA during simultaneous operations. For inop ALSF, increase LNAV/VNAV all Cats visibility to 1½ mile.

ALSF-2

MISSED APPROACH:

Climb to 1320 then climbing right turn to 4000 direct LOCAS and hold.

D-ATIS	CHARLOTTE APP CON	CHARLOTTE TOWER	GND CON	CLNC DEL
ARR 121.15 DEP 132.1	(001°-119°) 128.32 (120°-295°) 120.05 (296°-360°) 134.75 (180°-359°) 257.2 (360°-179°) 307.8	(Rwys 18L-36R, 5-23) 118.1 257.8 (Rwy 18C-36C) 126.4 257.8 (Rwy 18R-36L) 133.35 257.8	121.8 348.6 (WEST) 121.9 348.6 (EAST)	127.15 348.6



1320	4000	LOCAS	VGSI and RNAV glidepath not coincident (VGSI Angle 3.00/TCH 74).	HEKAM
<div><div>*LNAV only.</div><div><div>1320</div><div>4000</div><div>LOCAS</div><div>HEKAM</div><div>JENDA</div><div>LANSR</div><div>CIKDU</div><div>HAYOU</div><div>RW36R</div><div>2500</div><div>3000</div><div>4000</div><div>5000</div><div>6000</div></div></div>				
<div><div>*1.6 NM to RW36R</div><div>1.6</div><div>3.8 NM</div><div>1.6 NM</div><div>3.2 NM</div><div>3.2 NM</div><div>3.2 NM</div></div>				
CATEGORY	A	B	C	D
LPV DA	927/18 200 (200-½)			
LNAV/VNAV DA	1229-1¼ 502 (500-1¼)			
LNAV MDA	1320/24 593 (600-½)	1320-1¼ 593 (600-1¼)		
CIRCLING	1380-1 632 (700-1)	1500-2¼ 752 (800-2¼) 1500-2½ 752 (800-2½)		