

RNAV (GPS) Y RWY 5
CHARLOTTE/DOUGLAS INTL (CLT)

MISSED APPROACH: Climb to 4000 direct ATELL and hold, continue climb-in-hold to 4000.

RADAR REQUIRED

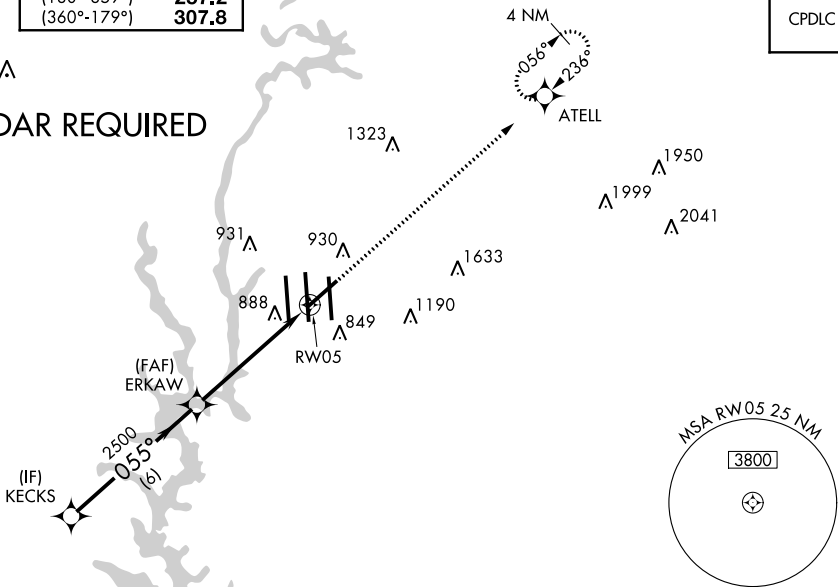


Diagram illustrating the RW05 approach path. The path starts at a 0500 altitude, descends at a 0.55-degree angle, and passes through the ERKAW fix at 2500 feet. The distance from the start to ERKAW is 6 NM. From ERKAW, the path continues to the RW05 fix, which is 1.7 NM away. The total distance from the start to RW05 is 7.7 NM. The diagram also shows the KECKS and RW05 VOR/DME stations, and the RW05 approach path. A note indicates that the VGS1 and RNAV glidepath are not coincident (VGS1 Angle 3.00/TCH 89).

CATEGORY	A	B	C	D
LPV DA **	916/24		200 (200-½)	
LNAV/ VNAV DA	1229/55		513 (600-1)	
LNAV MDA	1320/24 604 (700-½)		1320/55 604 (700-1)	
C CIRCLING	1380-1 632 (700-1)		1500-2¼ 752 (800-2¼)	1500-2½ 752 (800-2½)

