

WAAS Chan <b>52202</b> <b>W23A</b>	APCH CRS <b>228°</b>	Rwy Idg <b>7501</b> TDZE <b>200</b> Arpt Elev <b>218</b>
--	-------------------------	--

AL-147 [USAF]

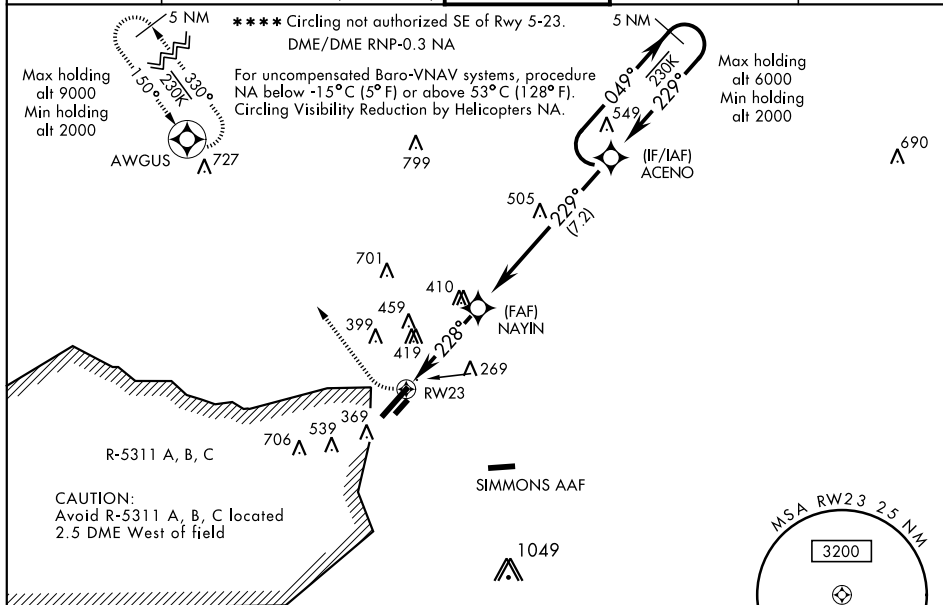
POPE AAF (KPOB)

- T** \* When ALS inop, increase CAT ABCD RVR to 40 vis to  $\frac{3}{4}$  mile.  
 \*\* When ALS inop, increase CAT ABCD vis to  $1\frac{1}{4}$  mile.  
 \*\*\* When ALS inop, increase CAT AB RVR to 55 and vis to 1 mile,  
 CAT CD vis to  $1\frac{3}{8}$  miles.



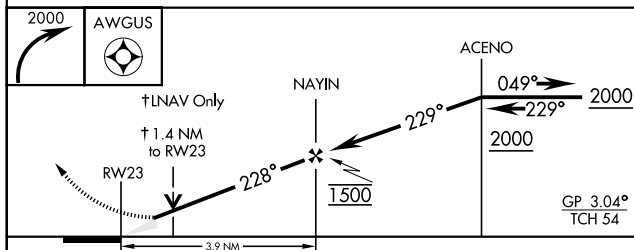
**MISSED APPROACH:** Climbing right turn to 2000 direct AWGUS and hold.

ATIS		FAYETTEVILLE APP CON		POPE TOWER		GND CON		CLNC DEL	
132.3	353.725	125.175	285.575 (271° - 090°)	135.025	291.1	124.55	275.8		275.8
		133.0	290.25 (091° - 270°)						



## RADAR REQUIRED

EMERG SAFE ALT 100 NM 5300



CATEGORY	A	B	C	D
LPV *	400/24	200	(200-½)	
INAV/ ** VNAV DA	572/40	372	(400-¾)	
INAV MD ***	680/24 480 (500-½)	680/50 480 (500-1)		
**** C CIRCLING	760-1 542 (600-1)	920-2 702 (800-2)	1060-2 842 (900-2¾)	

FIFV 218		TDZE 200
----------	--	----------

Rwy 05 Idg 7501'  
Rwy 23 Idg 7501'

