

## HI-ILS or LOC Z RWY 26

LOC I-DDX <b>109.9</b>	APCH CRS <b>261°</b>	Rwy ldg <b>11,760</b> TDZE <b>109</b> Arprt Elev <b>109</b>
---------------------------	-------------------------	--

JAL-169 [USAF]

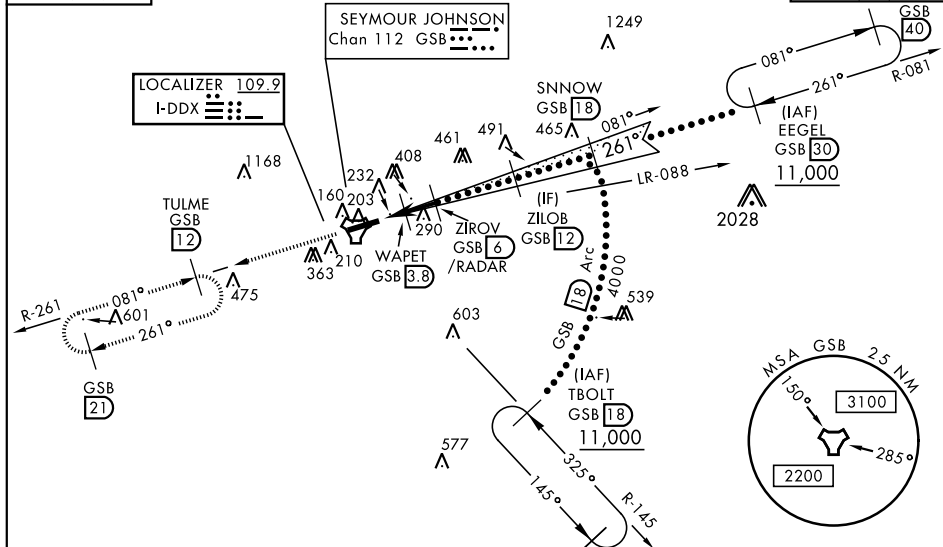
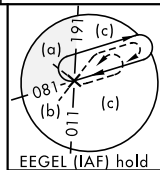
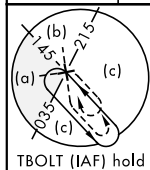
SEYMOUR JOHNSON AFB (KGSB)

- ▼ \* When ALS inop, increase RVR to 40 and vis to  $\frac{3}{4}$  mile.  
 \*\* When ALS inop, increase RVR to 60 and vis to  $1\frac{1}{2}$  miles.  
 \*\*\* Circling N of Rwy 8-26 not authorized.



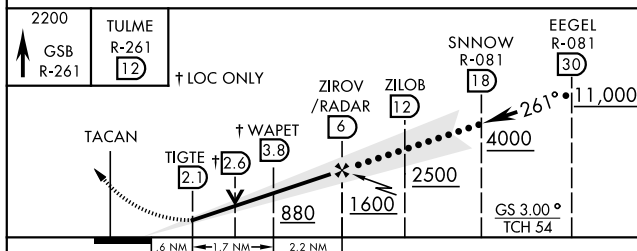
MISSED APPROACH: Climb to 2200 via GSB  
 TACAN R-261 to TULME and hold.

ATIS ★ <b>317.625</b>	SEYMOUR JOHNSON APP CON 258°-110° <b>123.7 290.9</b> 111°-257° <b>119.7 273.6</b>	SEYMOUR JOHNSON TOWER ★ <b>126.25 370.875</b>	GND CON <b>138.1 275.8</b>	CLNC DEL <b>128.025 270.8</b>
--------------------------	---	--	-------------------------------	----------------------------------

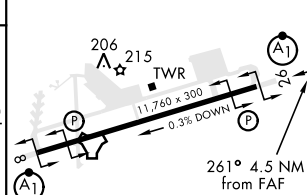


## RADAR or DME REQUIRED

EMERG SAFE ALT 100 NM 3700



ELEV 109	TDZE 109
----------	----------



CATEGORY	C	D	E
S-ILS 26 *	309/24	200 (200-½)	
S-LOC 26 **	500/35	391 (400-¾)	
*** CIRCLING	680-1½ 571 (600-1½)	700-2 591 (600-2)	760-2¼ 651 (700-2¼)

HIRL Rwy 8-26

FAF to MAP 3.9 NM

Knots	120	140	160	180	200
Min:Sec	1:57	1:40	1:28	1:18	1:10

## HI-ILS or LOC Z RWY 26