

GOLDSBORO, NORTH CAROLINA

TACAN GSB Chan 112	APCH CRS 081°	Rwy ldg 11,760 TDZE 73 Arprt Elev 109
------------------------------	-------------------------	--

JAL-169 [USAF]

HI-TACAN Z RWY 8

SEYMOUR JOHNSON AFB (KGSB)

▼

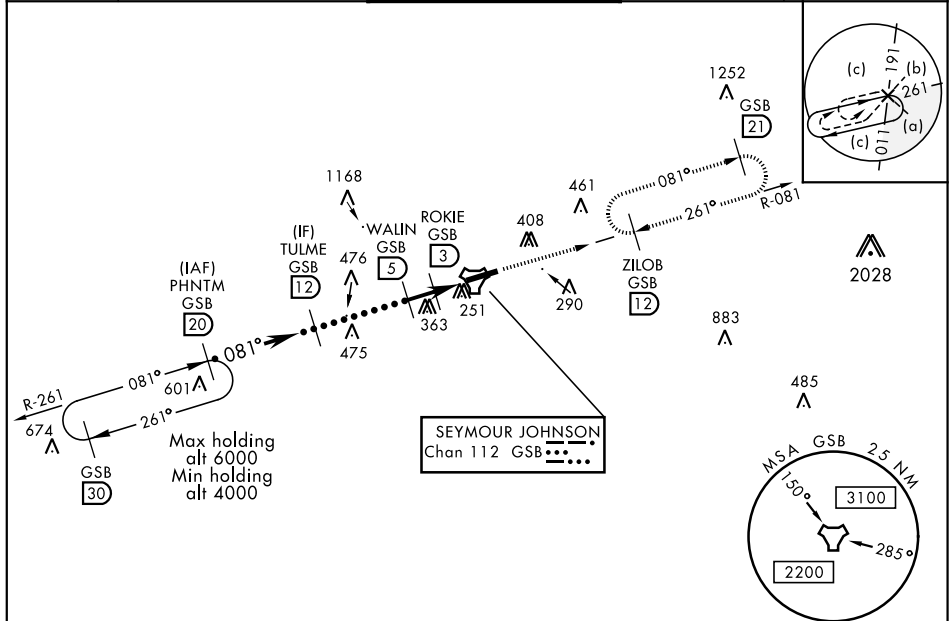
* When ALS inop, increase vis to 1½ miles.

** Circling N of Rwy 8-26 not authorized.

ALSF-1

MISSED APPROACH: Climb to 2300 via GSB TACAN R-081 to ZILOB and hold.

ATIS ★ 317.625	SEYMOUR JOHNSON APP CON 258°-110° 123.7 290.9 111°-257° 119.7 273.6	SEYMOUR JOHNSON TOWER ★ 126.25 370.875	GND CON 138.1 275.8	CLNC DEL 128.025 270.8
--------------------------	---	--	-------------------------------	----------------------------------



EMERG SAFE ALT 100 NM 3700

Profile view showing altitudes (4000, 2500, 1600, 960) and distances (2 NM, 2.1 NM, .5 NM) from the PHNTM fix to the runway. It also shows the ZILOB fix and the GSB TACAN station.

CATEGORY	C	D	E
S-8 *	560/50	487	(500-1)
CIRCLING **	680-1½ 571 (600-1½)	700-2 591 (600-2)	760-2¼ 651 (700-2¼)

ELEV 109

TDZE 73

Detailed view of the runway area, showing the runway (8-26), taxiways, and the location of the tower (170 feet) and the ZILOB VORTAC station. It also indicates the 081° approach course and the 4.6 NM distance from the FAF.

GOLDSBORO, NORTH CAROLINA 35°20'N-77°58'W SEYMOUR JOHNSON AFB (KGSB)

Amdt 7 05DEC19

HI-TACAN Z RWY 8