
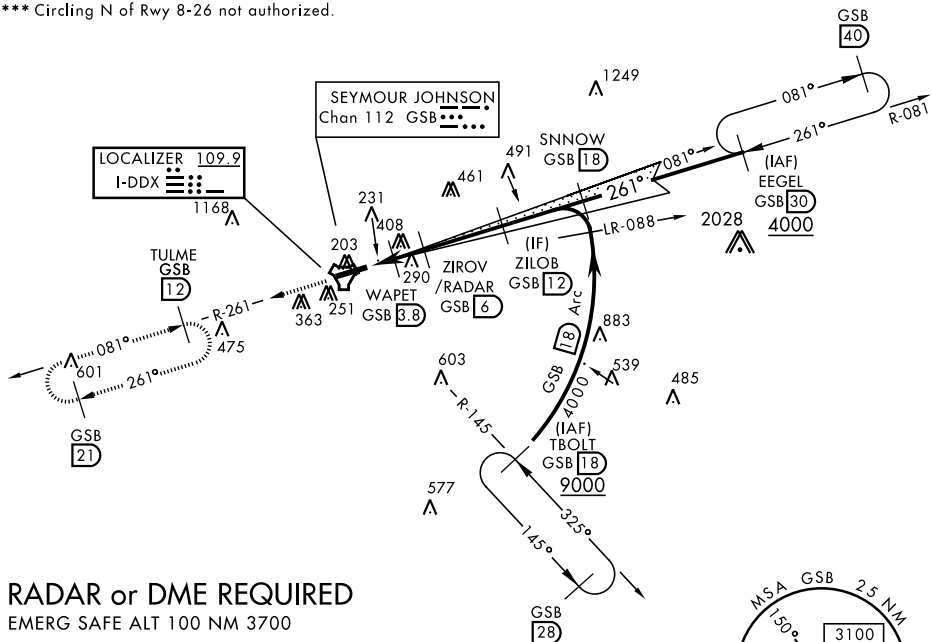


GOLDSBORO, NORTH CAROLINA

ILS or LOC Y RWY 26

LOC I-DDX <u>109.9</u>	APCH CRS 261°	Rwy ldg 11,760 TDZE 109 Arpt Elev 109	AL-169 [USAF]	SEYMOUR JOHNSON AFB (KGSB)
▼ * When ALS inop, increase RVR to 40 and vis to $\frac{3}{4}$ mile. ** When ALS inop, increase CAT AB RVR to 55 and vis to 1 mile, CAT CDE RVR to 60 and vis to $1\frac{1}{2}$ miles.			ALSF-1 	MISSED APPROACH: Climb to 2200 via GSB TACAN R-261 to TULME and hold.
ATIS ★ 317.625	SEYMOUR JOHNSON APP CON 258°-110° 123.7 290.9 111°-257° 119.7 273.6	SEYMOUR JOHNSON TOWER ★ 126.25 370.875	GND CON 138.1 275.8	CLNC DEL 128.025 270.8

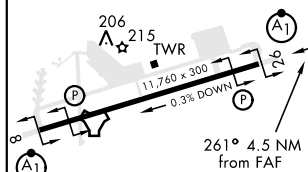
*** Circling N of Rwy 8-26 not authorized.



RADAR or DME REQUIRED

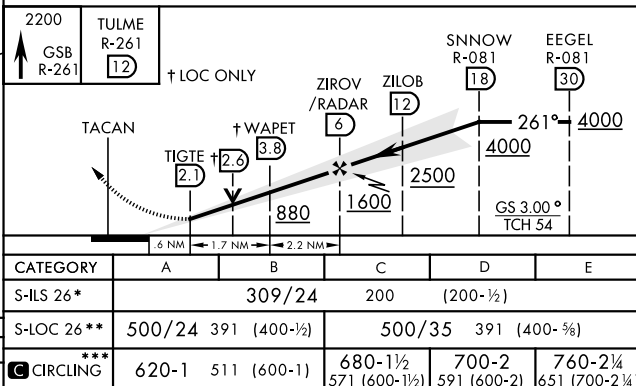
FMFRG SAFF AIT 100 NM 3700

ELEV	109		TDZE	109
------	-----	--	------	-----



HIRL Rwy 8-26

FAF to MAP 3.9 NM					
Knots	60	90	120	150	180
Min:Sec	3:54	2:36	1:57	1:34	1:18



GOLDSBORO, NORTH CAROLINA

35°20'N-77°58'W

SEYMOUR JOHNSON AFB (KGSB)

Amdt 8 07DEC17

ILS or LOC Y RWY 26

SE-2, 03 DEC 2020 to 31 DEC 2020

SE-2, 03 DEC 2020 to 31 DEC 2020