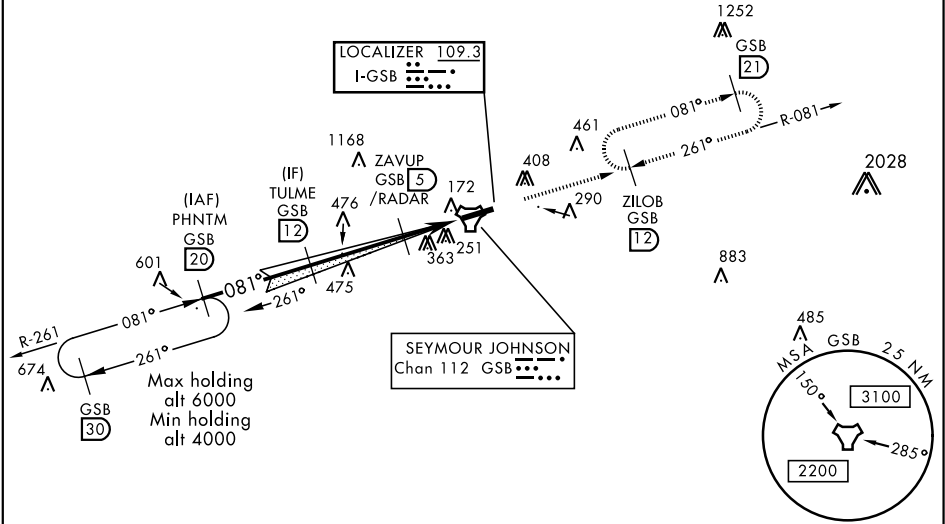


GOLDSBORO, NORTH CAROLINA

ILS or LOC Y RWY 8

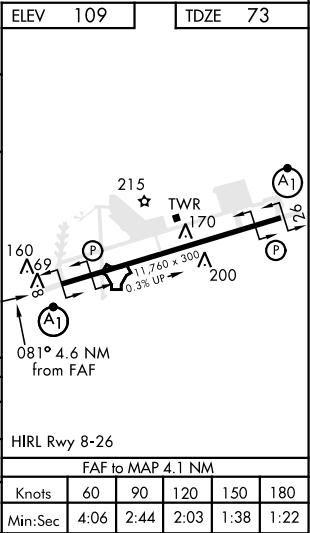
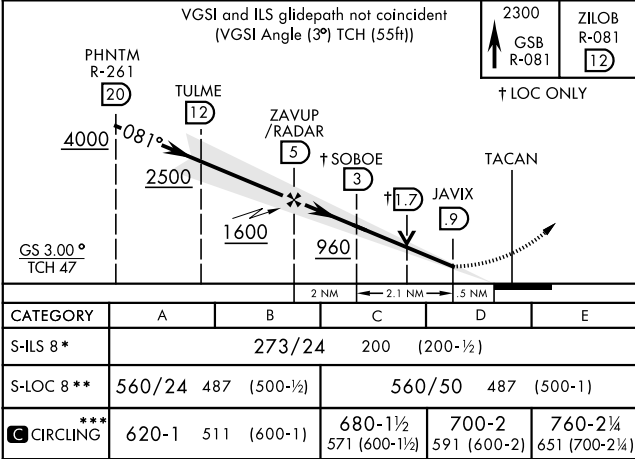
LOC I-GSB 109.3	APCH CRS 081°	Rwy Idg 11,760 TDZE 73 Arpt Elev 109	AL-169 [USAF]	SEYMOUR JOHNSON AFB (KGSB)
▼ * When ALS inop, increase RVR to 40 and vis to ¾ mile. ** When ALS inop, increase CAT AB RVR to 55 and vis to 1 mile, CAT CDE vis to 1 ¾ miles.			ALSF-1 	MISSED APPROACH: Climb to 2300 via GSB R-081 to ZIOB and hold.
ATIS ★ 317.625	SEYMOUR JOHNSON APP CON 258°-110° 123.7 290.9 111°-257° 119.7 273.6	SEYMOUR JOHNSON TOWER ★ 126.25 370.875	GND CON 138.1 275.8	CLNC DEL 128.025 270.8

*** Circling N of Rwy 8-26 not authorized.



RADAR or DME REQUIRED

EMERG SAFE ALT 100 NM 3700



GOLDSBORO, NORTH CAROLINA

35°20'N-77°58'W

SEYMOUR JOHNSON AFB (KGSB)

Amdt 7 07DEC17

ILS or LOC Y RWY 8

SE-2, 03 DEC 2020 to 31 DEC 2020

SE-2, 03 DEC 2020 to 31 DEC 2020