

GOLDSBORO, NORTH CAROLINA

RNAV (GPS) RWY 26

APCH CRS	Rwy Idg	11,760
261°	TDZE	109
	Arpt Elev	109

AL-169 (USAF)

SEYMOUR JOHNSON AFB (KGSB)

⚠ * When ALS inop, increase vis to 1 3/8 miles.
** When ALS inop, increase CAT A/B RVR to 55, vis to 1 mile; CAT C/D vis to 1 1/4 miles.
*** Circling NA N of Rwy 8-26.

ALSF-1

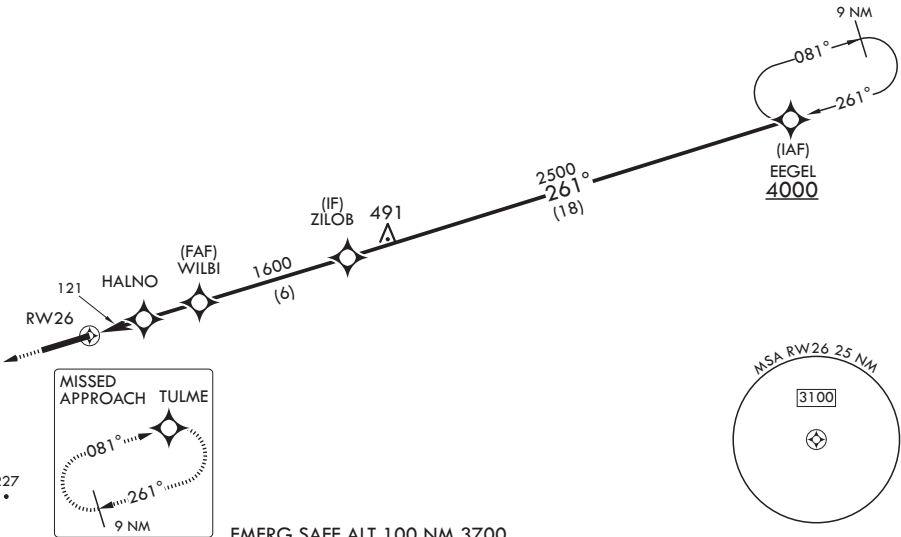


MISSED APPROACH: Climb to 2200 direct TULME and hold.

ATIS★ 317.625	APP CON 119.7 273.6 111° -257° 123.7 290.9 258° -110°	TOWER 126.25 370.875	GND CON 138.1 275.8	CLNC DEL 128.025 270.8
------------------	---	-------------------------	------------------------	---------------------------

DME/DME RNP -0.3 NA

For uncompensated Baro-VNAV systems, procedure NA below -15°C (5°F) or above 53°C (128°F).



2200

TULME

ELEV 109

TDZE 109

† LNAV only

RW26 † 1.2 NM to RW26

HALNO

WILBI

ZILOB

EEGEL

4000

2500

GP 3.04°
TCH 55

860 †

1600

2.2 NM

2.3 NM

CATEGORY	A	B	C	D	E
LNAV/VNAV DA*	510/40		401	(500-¾)	
LNAV MDA**	540/24 431 (500-½)		540/40	431	(500-¾)
CIRCLING***	620-1 511 (600-1)		680-1½ 571 (600-1½)	700-2 591 (600-2)	760-2¼ 651 (700-2¼)

HIRL all Rwy's

HIRL all Rwy

GOLDSBORO, NORTH CAROLINA

35°20'N - 77°58'W

SEYMOUR JOHNSON AFB (KGSB)

Amtr 4 02JAN20

RNAV (GPS) RWY 26

SE-2, 03 DEC 2020 to 31 DEC 2020

SE-2, 03 DEC 2020 to 31 DEC 2020