

GOLDSBORO, NORTH CAROLINA

# TACAN Y RWY 26

TACAN GSB Chan <b>112</b>	APCH CRS <b>261°</b>	Rwy Idg <b>11,760</b> TDZE <b>109</b> Arpt Elev <b>109</b>
------------------------------	-------------------------	--

AL-169 [USAF]

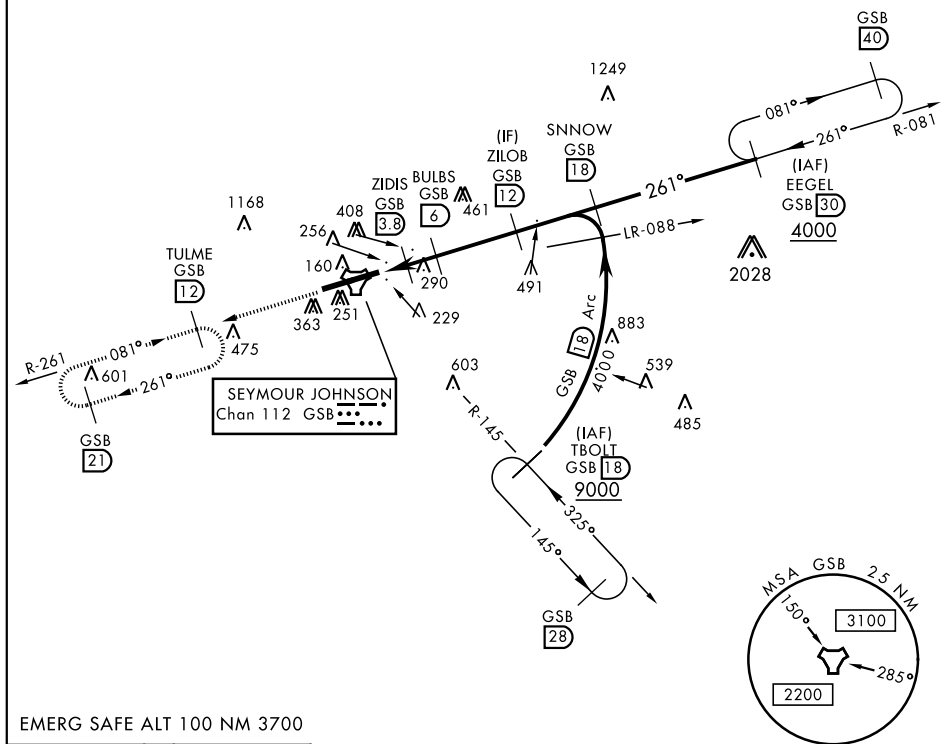
SEYMOUR JOHNSON AFB (KGSB)

**T** \* When ALS inop, increase CAT AB RVR to 55, vis to 1 mile, CAT CDE vis to 1¼ miles.  
 \*\* Circling N of Rwy 8-26 not authorized.

ALSF-1

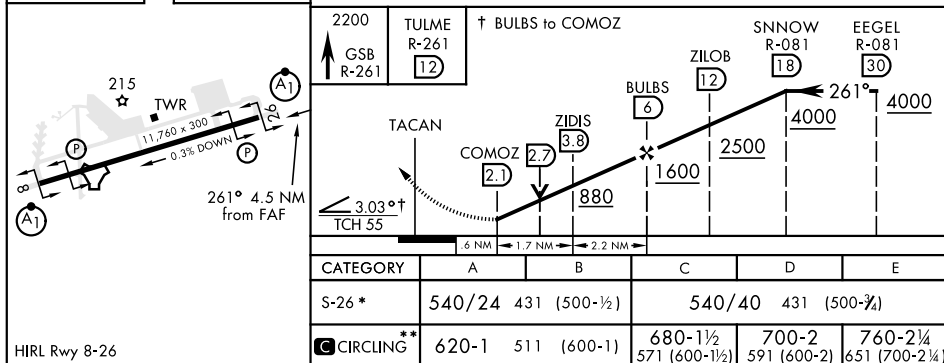
**MISSED APPROACH:** Climb to 2200 via GSB R-261 to TULME and hold.

<p>ATIS ★</p> <p><b>317.625</b></p>	<p>SEYMOUR JOHNSON APP CON</p> <p>258°-110° <b>123.7 290.9</b></p> <p>111°-257° <b>119.7 273.6</b></p>	<p>SEYMOUR JOHNSON TOWER ★</p> <p><b>126.25 370.875</b></p>	<p>GND CON</p> <p><b>138.1 275.8</b></p>	<p>CLNC DEL</p> <p><b>128.025 270.8</b></p>
-------------------------------------	--	---	--	---



EMERG SAFE ALT 100 NM 3700

ELEV	109		TDZE	109
------	-----	--	------	-----



GOLDSBORO, NORTH CAROLINA

35° 20'N-77° 58'W

SEYMOUR JOHNSON AFB (KGSB)

## TACAN Y RWY 26

SE-2, 03 DEC 2020 to 31 DEC 2020

SE-2, 03 DEC 2020 to 31 DEC 2020