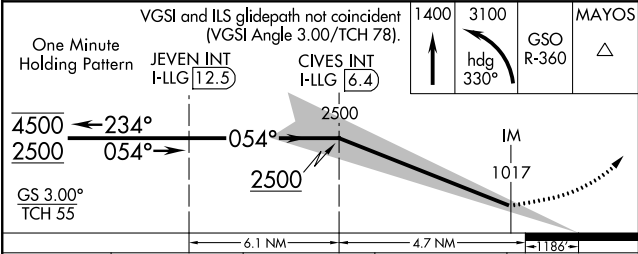
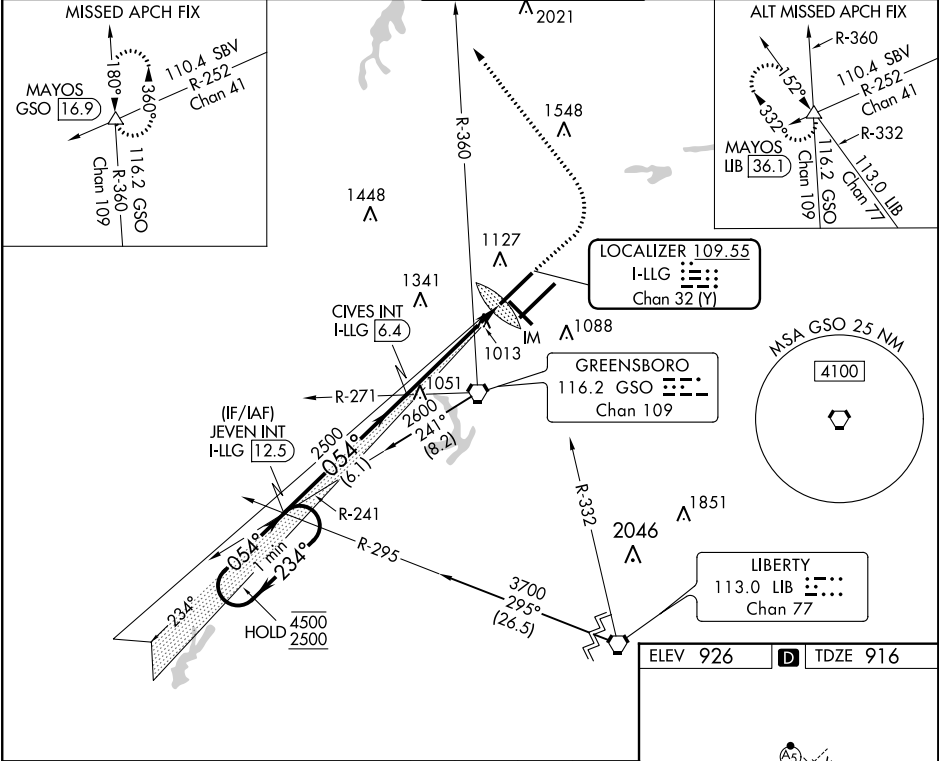


LOC/DME I-LLG	APP CRS	Rwy Idg	9000
109.55	054°	TDZE	916
Chan 32 (Y)		Apt Elev	926

ILS RWY 5L (CAT II & III)  
PIEDMONT TRIAD INTL (GSO)

DME or RADAR required for procedure entry at LIB VORTAC.	ALSF-2	MISSED APPROACH: Climb to 1400 then climbing left turn to 3100 on heading 330° and GSO VORTAC R-360 to MAYOS INT/GSO 16.9 DME and hold.
Simultaneous approach authorized with Rwy 5R.		

D-ATIS 128.55	GREENSBORO APP CON 124.35 269.225 (250°-049°) 126.6 327.075 (050°-249°)	GREENSBORO TOWER 119.1 290.325	GND CON 121.9 348.6	CLNC DEL 121.75
------------------	---	-----------------------------------	------------------------	--------------------



CATEGORY	A	B	C	D
S-ILS 5L	CAT II RA 113/12 100 DA 1016			
S-ILS 5L	CAT III RVR 06			

CATEGORY II & III ILS - SPECIAL AIRCREW  
& AIRCRAFT CERTIFICATION REQUIRED

